



# ScholarshipAmerica®

Dollars for Scholars® • Scholarship Management Services® • ScholarShop®

## 2004 Annual Report



What's Possible?

*"In a world where a college education is necessary for success, not having the means can be disheartening. I have achieved my educational goals and my scholarship has served as a stepping stone for the future."*

*– Mateo S., Class of 2003,  
Northwest Vista College*

# What's Possible?


## Scholarship America's mission can change the world.

We have helped more than one million students further their education by distributing more than one billion dollars in scholarships. And we're not stopping there.

Scholarship America creates possibilities for students from all backgrounds. In Fiscal Year 2004, Scholarship America helped more than 16,000 4th through 12th graders chart their futures, and awarded \$160 million to 112,804 college students – made possible through thousands of volunteers and donations from individuals and corporations who believe in the power of education.

Our country's strength lies in its diversity, and relies on the education of its citizens. Education opens the door to students' dreams. It opens the door to new experiences, new friends, new ways of thinking. It helps answer the question, What's possible?

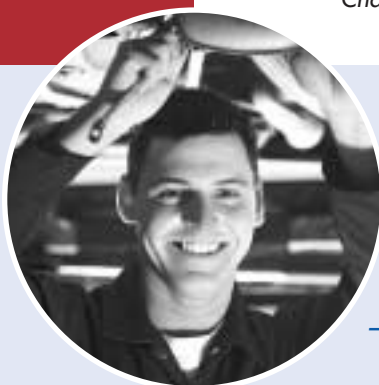
We must make it possible for all students, regardless of their financial status, to have the access to education and the academic support they need, from the time they begin school until they finish college. And yes, that's a bold statement, but education can – and will – change the world.



Richard J. Schwab  
Chair of the Board



Clifford L. Stanley, Major General, USMC (Retired)  
President



*"My supervisor commented how much my confidence has grown since I've started school. I walk taller; I speak with a little more confidence. With the financial help I've received from this scholarship, I've been able to focus on what classes to take rather than how to pay for classes."*

– Crystal P., Class of 2005, Augsburg College

**What is possible** through education? When we contribute to a culture of learning, we all benefit from new ideas. Sometimes a great idea is replaced by an even greater idea. Education creates possibilities.

Everyone has a stake in supporting education; it empowers us to pay the world back many times over. It's an offer we can't refuse.

Our programs, Dollars for Scholars®, Scholarship Management Services® and ScholarShop®, are designed to expand access to education. These programs help answer the quintessential questions: What do you want to be when you grow up? What's possible?

# What's Possible?

*"My father was killed in the attacks on the World Trade Center. But thankfully for me, there was hope. Through the Families of Freedom Scholarship Fund®, Scholarship America gave me the opportunity to attend this excellent university where I can pursue my dream of helping others. The trust Scholarship America has placed in me has strengthened my determination to succeed."*

– Erin F., Class of 2006, American University

**Dollars for Scholars** creates possibilities on the grassroots level, raising money in communities for their local students. In 1958, Dr. Irving Fradkin founded Dollars for Scholars with the winning idea that if everyone in his hometown gave a dollar, they could help more students go to college. This concept continues to hold true today.

*In FY 2004, Dollars for Scholars*

- Raised \$58,342,875
- Distributed \$29,135,998 to 34,828 students
- Established 93 new chapters for a total of 1,210 in 41 states and the District of Columbia

Students are encouraged by a private sector that facilitates their discovery of what is possible through education. **Scholarship Management Services** is the nation's largest designer and manager of scholarship and tuition reimbursement programs.

Opportunity is an essential building block of success, and scholarships sponsored by private-sector sources ensure a steady infusion of educated workers.

*In FY2004, Scholarship Management Services*

- Distributed \$130,576,836 to 77,976 students through 1,016 sponsored programs nationwide
- Processed 265,510 scholarship applications
- Added 98 new sponsored scholarship programs

For youth who seek good ends, **ScholarShop** nourishes their beginnings. ScholarShop helps kids in grades 4-12 find their way down the wondrous road of self-discovery by teaching that there is real power in their choices – the power to create possibilities through education.

ScholarShop's sequential learning process points to a clear resolution where, in the end, college isn't even a question – it's the answer. By glimpsing possibilities ahead of them, kids see that their future is a bright place shaped by their own bright ideas.

ScholarShop's Options for Kids ([www.scholarshopkids.org](http://www.scholarshopkids.org)), launched during National Scholarship Month® in May 2004, features cartoon cool cat GARFIELD™ as an online, interactive guide in a game-like environment promoting positive youth development for 4-6 graders.

*In FY 2004, ScholarShop*

- Added 38 new sites for a total of 185
- Trained 42 new ScholarShop coordinators
- Provided resources for 16,250 students and family members

Education is a proven means to all good ends, and to endless possibilities. Supporting Scholarship America is just the beginning – someone else's beginning. By educating citizens, we are making an investment in the future of our nation.



*"A lot of my students don't know anyone who has gone to college, other than their teachers. They do not see the good in themselves or where their talents can lead them. I learned as a student that ScholarShop opens students' minds and eyes to what they can be; students that I teach will know what they can become."*

*– Tiffany F., Class of 2003, St. Olaf College*



## What's Possible?

## What's Possible?

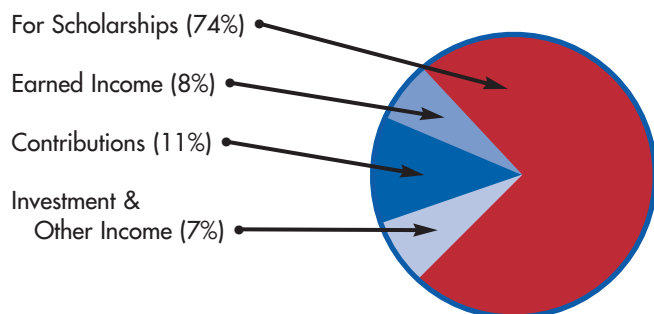
Scholarship America helps students explore their limitless possibilities.

Their success is our ultimate success.

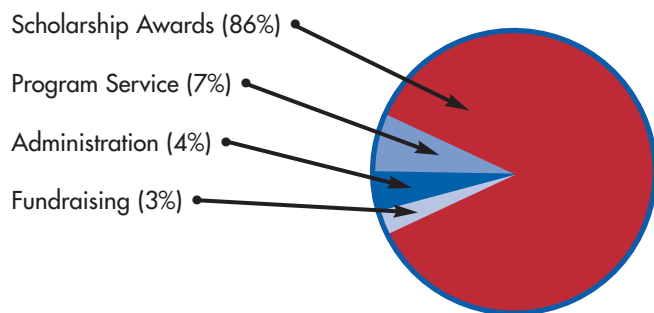
Scholarship America helps students explore their limitless possibilities. Their success is our ultimate success.

# Scholarship America Financial Summary

**2004 Income: \$94,467,262**



**2004 Expenses: \$93,109,685**



Since 1958, Scholarship America has distributed more than one billion dollars in scholarships to more than one million students.

For more information about:

Starting a scholarship or educational assistance program at your company, call Scholarship Management Services at 800/537-4180

Organizing a Dollars for Scholars chapter, call 800/537-4180, ext. 490

Starting a ScholarShop in your community, call 800/537-4180, ext. 656

Sponsorship opportunities, call 800/279-2083

Making a donation, call 800/279-2083

## STATEMENTS OF FINANCIAL POSITION June 30, 2004 and 2003

	<u>2004</u>	<u>2003</u>
<b>Assets</b>		
Current assets:		
Cash and cash equivalents	\$37,568,273	\$117,218,820
Accounts, interest and other receivables	2,367,855	2,688,579
Contributions receivable, net	1,999,915	4,378,833
Prepaid expenses and other assets	819,537	215,699
Total current assets	<u>42,755,580</u>	<u>124,501,931</u>
Contributions receivable, less current portion, net	2,260,614	3,229,628
Investments	115,603,750	24,153,294
Cash value of life insurance	220,947	202,206
Property and equipment:		
Land	329,436	329,436
Building and improvements	4,520,039	4,438,241
Furniture and equipment	2,984,411	2,881,866
	<u>7,833,886</u>	<u>7,649,543</u>
Less accumulated depreciation	3,721,244	3,301,105
Property and equipment, net	<u>4,112,642</u>	<u>4,348,438</u>
Total assets	<b><u>\$164,953,533</u></b>	<b><u>\$156,435,497</u></b>
<b>Liabilities and Net Assets</b>		
Current liabilities:		
Accounts payable	\$615,974	\$290,923
Accrued expenses	433,424	447,960
Note payable	1,800,000	-
Current portion of long-term debt	86,939	82,631
Scholarships payable	9,382,107	7,496,545
Refundable deposits	15,696,714	12,449,701
Total current liabilities	<u>28,015,158</u>	<u>20,767,760</u>
Long-term debt	2,214,156	2,301,095
Total liabilities	<u>30,229,314</u>	<u>23,068,855</u>
Commitments and contingency		
Net assets:		
Unrestricted:		
Designated for endowment	445,257	445,257
Undesignated	1,880,863	3,025,939
Total unrestricted	<u>2,326,120</u>	<u>3,471,196</u>
Temporarily restricted	116,213,872	114,019,769
Permanently restricted	16,184,227	15,875,677
Total net assets	<u>134,724,219</u>	<u>133,366,642</u>
Total liabilities and net assets	<b><u>\$164,953,533</u></b>	<b><u>\$156,435,497</u></b>



For a full annual report, please visit [www.scholarshipamerica.org](http://www.scholarshipamerica.org).



# New Chapters and Sites

## DOLLARS FOR SCHOLARS CHAPTERS ADDED IN 2004

### California

Clovis High School Cougar Foundation  
Earlie J. Barnett Scholarship Foundation  
Dollars for Scholars (Victorville)  
Fremont Chamber of Commerce  
Dollars for Scholars  
Hallmark's Dollars for Scholars (Sanger)  
Inner City Industry (Inglewood)  
Linda Vista Dollars for Scholars  
(San Diego)  
Dollars for Scholars Migrant Education  
(Visalia)  
North Hollywood Blockbuster Dollars  
for Scholars  
RIMS AVID Scholarship Program  
Dollars for Scholars (San Bernardino)  
University High School Dollars for  
Scholars (Fresno)

### Connecticut

Union School Association Scholarship  
Foundation Dollars for Scholars

### Florida

Collier County Dollars for Scholars  
(Naples)  
Communities In Schools of Broward  
County Dollars for Scholars  
(Lauderdale Lakes)  
Communities In Schools of Palm Beach  
County Dollars for Scholars  
Communities In Schools of St. John's  
County Dollars for Scholars  
(St. Augustine)  
Communities In Schools of Santa Rosa  
County Dollars for Scholars (Milton)  
Communities In Schools of Southwest  
Florida Dollars for Scholars  
(Bradenton)  
The Foundation for Osceola Education,  
Inc., an affiliate of Dollars for  
Scholars (Kissimmee)  
The Foundation for Seminole County  
Public Schools, an affiliate of Dollars  
for Scholars (Sanford)  
Palm Harbor Chamber of Commerce,  
an affiliate of Dollars for Scholars

### Illinois

Arlington Heights Dollars for Scholars  
Bensenville Rotary Club Dollars for  
Scholars  
Bolingbrook Rotary Club Dollars for  
Scholars  
Career Advisory Council Dollars for  
Scholars (Lake Zurich)  
Community Unit 2 Foundation for  
Education Inc., Dollars for Scholars  
(Serena)  
Elgin Breakfast Rotary Dollars for  
Scholars  
Joliet Township Dollars for Scholars  
NFL Retired Players/Chicago Dollars  
for Scholars  
North Shore Dollars for Scholars  
(Winnetka)  
PLCCA, Inc. - ACT Youth Scholarship  
Program (Maywood)  
Plainfield Area Chamber of Commerce  
Dollars for Scholars  
RAMM Scholarship (Rockford)  
Reed-Custer Educational Foundation  
(Braidwood)  
Rotary Club of Villa Park Dollars  
for Scholars

### Indiana

Centerville-Abington Dollars for  
Scholars  
Danville Community Education  
Foundation - a chapter of Dollars  
for Scholars  
Edgewood High School Dollars for  
Scholars (Ellettsville)  
Indiana Foundation for Home Schooling  
Dollars for Scholars (Indianapolis)  
Monroe Central Community Dollars  
for Scholars (Parker City)  
Richmond High School Alumni  
Association Dollars for Scholars

### Iowa

Central Lyon Dollars for Scholars  
(Rock Rapids)  
Davenport Dollars for Scholars  
Iowa Cosmetology Schools Association  
Dollars for Scholars (Des Moines)  
Kee High Dollars for Scholars (Lansing)  
Mid-Prairie Dollars for Scholars  
(Kalona)

New Hampton Dollars for Scholars  
Norwalk Dollars for Scholars  
Paton-Churdan Dollars for Scholars  
Pleasant Valley Schools Educational  
Foundation

### Kentucky

Oldham County Dollars for Scholars  
(Pewee Valley)

### Maine

The Island Institute (Rockland)  
Upward Bound at USM Dollars for  
Scholars (Gorham)

### Massachusetts

Andrew W. Teibel Dollars for Scholars  
(Ashland)

### Minnesota

Dover-Eyota Dollars for Scholars  
Higher Ground Academy Dollars for  
Scholars (St. Paul)  
Lakeview Dollars for Scholars  
(Cottonwood)  
LeCenter Dollars for Scholars  
Mall of America Foundation for Youth  
(Bloomington)  
North Branch Area Dollars for Scholars

### Missouri

Clark County Dollars for Scholars, Inc.  
(Kahoka)

### Nebraska

Banner County Dollars for Scholars  
(Harrisburg)  
Foundation for Knowledge, a Dollars  
for Scholars Chapter (Palmyra)

### New Hampshire

Exeter Dollars for Scholars  
New Hampshire Electric Co-op Dollars  
for Scholars (Plymouth)

### New York

Allegany County Area Foundation  
(Wellsville)  
Manhattan Liberty Scholars Dollars for  
Scholars (New York)  
Norwich Dollars for Scholars

New York Latino Dollars for Scholars:  
Greater Capital Region (Albany)  
Scio Area Dollars for Scholars  
Scholarship Fund  
Southeast Queens/Elmont Dollars for  
Scholars (Jamaica)

### North Dakota

Adams-Edmore Dollars for Scholars  
Finley-Sharon Dollars for Scholars  
Griggs County Central Dollars for  
Scholars (Cooperstown)  
New Rockford Dollars for Scholars  
Sargent Central Dollars for Scholars  
(Forman)  
Stanley Dollars for Scholars  
Turtle Mountain Dollars for Scholars  
(Belcourt)

### Pennsylvania

Gettysburg Area Dollars for Scholars

### Washington

ARHS Booster Club Dollars for Scholars  
(Auburn)  
Aberdeen High School Dollars for  
Scholars  
Curtis Viking Scholarship Fund  
(University Place)  
Federal Way Sunrise Rotary Foundation  
Klickitat Dollars for Scholars Foundation  
Napavine High School Scholarship  
Foundation  
Olympia Education Association Dollars  
for Scholars  
SCCFT 1789 Dollars for Scholars  
(Seattle)  
Sammamish Dollars for Scholars  
Summer-Bonney Lake Education  
Foundation  
Tacoma School of the Arts Scholarship  
Fund  
Touchet Educational Foundation  
Washington Apple Education  
Foundation (Wenatchee)

### Wisconsin

Marshall Scholarship Foundation  
Dollars for Scholars  
Webster School District Dollars for  
Scholars

## SCHOLARSHIP SITES ADDED IN 2004

### Cleveland, OH

Olivet Institutional Baptist Church

### Greenville, MS

I Challenge You

### Indianapolis, IN

Flanner House

### Kissimmee, FL

Foundation for Osceola  
Education (9 Locations)

### Muncie, IN

Kids COOL

### New York, NY

Highbridge Voices

### New York, NY

NYC Alternative High Schools and  
Programs (10 Locations)

### Orlando, FL

Boys & Girls Clubs of Central Florida  
(3 Locations)

### Orlando, FL

Esteem for Florida Youth, Inc.  
(6 Locations)

### Orlando, FL

UCF McKnight Center of Excellence

### Riverton, WY

Central Wyoming College Education  
Talent Search/GEAR UP

### Wellpinit, WA

Wellpinit School Spokane  
Indian Reservation

## SCHOLARSHIP JR. SITES ADDED IN 2004

### Harvey, IL

Prairie Hills Elementary School  
District

### Lake Station, IN

Boys & Girls Clubs of Northwest  
Indiana

# New Programs

## SCHOLARSHIP MANAGEMENT SERVICES PROGRAMS ADDED IN 2004

### **ATEK, LLC Companies**

ATEK Scholarship Program

### **Allvac**

Allvac Scholarship Program

### **American Coalition for Ethanol**

ACE Scholarship Program

### **Architectural Woodwork Institute**

Architectural Woodwork Institute  
Scholarship Program

### **Ashworth Incorporated**

Ashworth Scholarship Program

### **Automatic Fire Protection, Inc.**

Automatic Fire Protection Palmer Family  
Education Assistance Program

### **Blyth, Inc.**

Blyth, Inc. Scholarship Program

### **Browning Automotive Group**

Browning Automotive Education  
Assistance Program

### **Burger King/McLamore Foundation (BKMF)**

Burger King Employee Scholars  
Program

### **CBS Broadcasting, Inc.**

Education Trust for Alexandra and  
Sydney Barile

### **California Tan, Inc.**

California Tan Scholarship Program

### **Canadian Pacific Railway**

CPR Scholarship Program for  
Dependents of Canadian Employees

### **Chamberlain Group, Inc.**

Chamberlain Scholarship Program

### **Children's Memorial Hospital**

Children's Memorial Hospital  
Scholarship Program

### **Citizens Financial Group**

Citizens Scholars Program

### **Council of Higher Education**

Council of Higher Education  
Scholarship Program

### **Dermalogica Foundation**

Dermalogica Foundation Scholarship  
Program

### **Dex Media Inc.**

Dex Media Education Assistance Plan

### **Diebold, Incorporated**

Diebold, Incorporated Scholarship  
Program

### **Duke Realty Corporation**

Duke Realty Scholarship Program

### **Dunkin' Donuts**

Western MA Dunkin' Donuts Franchisee  
Scholarship Program

### **EaglePicher Technologies, LLC**

EaglePicher Scholarship Program

### **East Bay Community Foundation**

TBS Couriers Scholarship Program

### **Engineered Arresting Systems Corporation**

ESCO Scholarship Program

### **ExpressJet Scholarship Fund, Inc.**

ExpressJet Scholarship Program

### **Fiserv, Inc.**

Fiserv Twentieth Anniversary  
Scholarship Program

### **Fleet National Bank, Trustee**

Frank A. and Charlotte G. Young  
Memorial Fund

### **Fleet National Bank, Trustee**

Sasso Scholarship Fund

### **Fleet National Bank, Trustee**

Benjamin A. Armstrong Trust

### **Fleet National Bank, Trustee**

Charlotte and Raymond W. Marshall  
Scholarship Fund

### **Fleet National Bank, a Bank of America Company**

Albert and Evelyn Black Fund of  
Concord

### **Fleet National Bank, a Bank of America Company**

Clinton Mills Fund for Worthy Students

### **Fleet National Bank, a Bank of America Company**

Herbert Fales Educational Trust

### **Fluidmaster Inc.**

Fluidmaster Adolf Schoepe Scholarship  
Program

### **Forging Industry Educational and Research Foundation (FIERF)**

Charles W. Finkl Fund Scholarship  
Program

### **Franciscan Health System**

Franciscan Children's Scholarship and  
Student Loan Program

### **Frank J. Corbett Health Marketing Scholarship Foundation, Inc.**

Frank J. Corbett Health Marketing  
Scholarship Program

### **GATX Foundation**

GATX Scholars Program

### **GEICO Philanthropic Foundation**

David Lloyd and Carmen Kreeger  
Scholarships

### **GlaxoSmithKline Consumer Healthcare**

Parsippany Science & Math Scholarship  
Program

### **Gold Banc Corporation, Inc.**

Gold Banc Scholarship Program

### **InCharge Institute**

InCharge Institute Education Assistance  
Program

### **Iron Mountain Corporation**

The Iron Mountain Education Fund

### **John Muir/Mt. Diablo Health System**

John Muir/Mt. Diablo Health System  
Nursing Scholarship Program

### **Joseph J. Grano, Jr. Scholarship Foundation**

Joseph J. Grano, Jr. Scholarship  
Foundation Program

### **Liano Family**

Anthony D. Liano Scholarship Program

### **Manning & Napier Advisors, Inc.**

Manning & Napier Advisors  
Scholarship Program

### **Marathon Ashland Petroleum LLC**

Marathon Ashland Petroleum Retraining  
Program

### **Marquette Financial Companies**

Marquette Financial Companies  
Scholarship Program

### **McLamore Family Foundation**

James W. McLamore Outstanding  
Scholars Program

### **Medtronic**

Global Business Solutions Scholarship  
Program

### **Mercedes-Benz U.S. International, Inc.**

Mercedes-Benz U.S. International  
Scholarship Program

### **Mercedes-Benz USA**

DRIVE YOUR FUTURE Mercedes-Benz  
USA Joseph Zwicker, Jr. Scholarship  
Program

### **Mercedes-Benz USA, LLC**

Drive Your Future: Mercedes-Benz USA  
Scholarship Program

### **Mercedes-Benz USA, LLC**

Youth Organization Scholarships

### **Metris Companies Foundation**

Metris Companies Scholarship Program

### **Michael & Susan Dell Foundation Scholars Program**

The Dell Scholars Program

### **Minnesota Professional Towing Association**

Minnesota Professional Towing  
Association Scholarship Program

### **Mitretek Systems**

Mitretek Systems Dependent Scholarship  
Program

### **National City Bank of Pennsylvania**

Janet Henry Scholarship Fund

### **National City Bank of Pennsylvania, Trustee**

Charles C. and Margaret M. Fritts  
Scholarship Fund

### **National City Bank of Pennsylvania, Trustee**

Edith Langdale Scholarship Fund

### **National City Bank of Pennsylvania, Trustee**

PICCO Fund

### **National City Bank of Pennsylvania, Trustee**

Lola G. Duff and William H. Duff II  
Scholarship Fund

### **National City Bank of Pennsylvania, Trustee**

Charles W. Pehna, Jr. Scholarship Fund

### **National City Bank of Pennsylvania, Trustee**

Scholarship Programs

### **National City Bank of Pennsylvania, Trustee**

Lola G. Duff and William H. Duff, II  
Scholarship Fund

### **National City Bank of Pennsylvania, Trustee**

Leroy Erickson Scholarship Fund

### **National City Bank of Pennsylvania, Trustee**

Catherine Barnsley Troxell Education  
Fund

### **National City Bank of Pennsylvania, Trustee**

Keller Foundation Fund

### **National City Bank of Pennsylvania, Trustee**

V. E. & Betty Phillips Scholarship Fund

### **National City Bank of Pennsylvania, Trustee**

Samuel Epstein Foundation Fund

### **National Society of Hispanic MBAs**

NSHMBA Scholarship Award Program

### **Nelnet, Inc.**

Nelnet Scholars Program

### **Network Associates, Inc.**

McAfee Scholars Program

### **Nissin Brake Ohio, Inc.**

Nissin Brake Ohio, Inc. Scholarship  
Awards Program

### **Nitilol Devices and Components**

NDC Scholarship Program

### **Norma J. Johnson Scholarship Fund**

Norma J. Johnson Scholarship Fund for  
Women in the Natural Sciences

### **Northrop Grumman Corporation**

Northrop Grumman Memorial  
Scholarship Fund

### **Northrop Grumman Corporation**

Northrop Grumman Scholarships for  
Employees' Children

### **Northwestern Mutual Foundation**

Northwestern Mutual Franklin  
Community Scholarship Program

### **OneBeacon Insurance Group Charitable Trust**

OneBeacon Insurance Group  
Scholarship Program

### **Patterson Dental Foundation**

Patterson Dental Foundation Scholarship  
Program

### **Piper Jaffray**

Piper Jaffray Educational  
Awards Program

### **Plante & Moran LLP**

The Plante & Moran Sons and  
Daughters Scholarship Program

### **Portable Sanitation Association International**

PSAI Scholarship Program

### **Queenstake Resources USA Inc.**

Queenstake Resources USA Inc.  
Education Assistance Program

### **Quicken Loans Inc.**

Quicken Loans Scholarship Program

### **Raytheon Company**

Raytheon First Robotics Scholarship  
Program

### **Resident Employee Education Fund (REFUND)**

REFUND Scholarship Program

### **Saint Luke's Health System**

Saint Luke's Health System Retirement  
Benefits Scholarship Program

### **Sara Lee Coffee & Tea - Consumer Brands**

Sara Lee Coffee & Tea - Consumer  
Brands Education Set-Aside Program

### **Scholarship Trusts**

Fleet National Bank, Trustee

Continued on next page...

# New Programs

## SCHOLARSHIP MANAGEMENT SERVICES PROGRAMS ADDED IN 2004

...continued from previous page

### **South Jersey Auto Retailers Association (SJARA)**

South Jersey Auto Retailers Association Scholarship Program

### **Spartech Corporation**

Bill Hiatt Scholarship Program

### **The Community Foundation for Greater Atlanta**

Ten scholarship programs

### **The Dopaco - Ed Fitts Scholarship Fund**

Dopaco - Ed Fitts Scholarship Program

### **The Fluor Foundation**

Fluor Foundation Job Corps Scholarship Program

### **The Saint Paul Foundation**

Coss Family Foundation Scholarship Fund

### **The Scotts Company**

The Scotts Company Scholarship Program

### **Thomson Publishing Services**

Thomson Publishing Services Scholarship Program

### **Toyota Motor Sales USA, Inc.**

Toyota Diversity Scholarship Program

### **U.S. Bank**

U.S. Bank Five Star Student Honor Roll Program

### **U.S. Bank**

U.S. Bank Teacher's Edition Awards Program

### **UBS**

UBS Diversity Scholarship Program

### **Ultimate Electronics Children's Fund**

Ultimate Electronics Children's Fund Employee Scholarship Program

### **Ultimate Electronics Children's Fund**

Ultimate Electronics Children's Fund Future Educators Scholarship Program

### **UniFirst Corporation**

The Aldo Croatti Scholarship Program

### **United Air Lines, Inc.**

United Airlines Memorial Scholarship Program

### **Universal Underwriters Insurance Company**

Universal Underwriters Group Sons and Daughters Scholarship Program

### **Valor Telecom**

Valor Telecom Daughters and Sons Scholarship Program

### **Valor Telecom**

Valor Telecom Community Leaders Scholarship Program

### **Wells Fargo Bank Private Client Services**

Wells Fargo Bank Private Client Services Scholarship Funds

### **Young Family Foundation**

Associates' Sons and Daughters Scholarship Program

## NEW COLLEGIATE PARTNERS IN 2004

Allen College, IA\*

Alliant International University, CA +

Anoka-Ramsey Community College, MN

Anoka Technical College, MN

Antioch University, Santa Barbara, CA

Baldwin-Wallace College, OH

Bastyr University, WA

Bemidji State University, MN

Berklee College of Music, MA

Bryant & Stratton College, NY \*

Capella University, MN

California State University, Bakersfield, MN +

California State University, Fresno, CA +

Castleton State College, VT +

Central Lakes College, MN

College of Saint Mary, NE +

College of the Sequoias, CA

Dakota County Technical College, MN

Dickinson College, PA

Dominican University, IL +

Ellsworth Community College, IA\*

Fisher College, MA\*+

Fond du Lac Tribal and Community College, MN

Framingham State College, MA

Hastings College, NE

Hennepin Technical College, MN

Hibbing Community College, MN

Indiana University Bloomington, IN

Indiana University East, IN

Inver Hills Community College, MN

Iowa Lakes Community College, IA

Lake Superior College, MN

Marshalltown Community College, IA

Martin University, IN

Massachusetts Institute of Technology, MA +

Merced College, CA

Minneapolis Community and

Technical College, MN

Minnesota State College-Southeast Technical, MN

Minnesota State Community and Technical

College, MN

Minnesota West Community and Technical

College, MN

Mount Ida College, MA

Nebraska Wesleyan University, NE

Normandale Community College, MN

North Hennepin Community College, MN

Northeast Higher Education District

Northeast Wisconsin Technical College, WI

Northern Arizona University, AZ

Northland Community and Technical College, MN

Northwest Technical College, MN

Onondago Community College, NY

Pine Technical College, MN

Purdue University, IN

Quinnipiac University, CT +

Reedley College, CA

Ridgewater College, MN

Riverland Community College, MN

Santiago Canyon College, CA

South Central Technical College, MN

Springfield College, MA

St. Ambrose University, IA

St. Cloud State University, MN

St. Cloud Technical College, MN

St. Paul College-A Community & Technical College, MN

St. Xavier University, IL

SUNY Geneseo, NY

Trinity College, CT +

University of California, Merced, CA +

University of Chicago, IL

University of New England, ME

University of North Carolina at Chapel Hill, ND

University of Wisconsin-Madison, WI

West Hills College Coalinga, CA

Wabash College, IN+

\* *Matching Partners agree to match Dollars for Scholars awards brought to their campuses.*

+ *Partners Plus go beyond the standard \$1,000 Collegiate Partners agreement, allowing awards over \$2,500 to replace students' unmet need or self-help*

# Scholarship America Donors

## NATIONAL INDIVIDUAL DONORS

**Gifts made to Scholarship America between July 1, 2003 and June 30, 2004.**

### DEAN'S LIST

#### MULTI-YEAR GIVING CLUB

##### • Salutatorian - (\$25,000 +)

Michael Ryan  
Peter Scialla

##### • Honors Graduate - (\$5,000 +)

Linda Burkett  
Steven & Teresa Kingsley  
William C. & Margaret R. Nelsen  
Patrick Ryan  
Doug & Grace Schroeder Scott  
Art Seifert

##### President's Club - (\$5,000 +)

Anonymous  
Linda Burkett  
Richard Crane  
Jeffrey and Anne Dalke  
Carl and Carolyn Dalstrom  
Donald Elg  
Patrick J. Ellingsworth  
Suzanne H. Esber  
Steven & Teresa Kingsley  
Phyllis R. McGrath  
Ken & Sue Murray  
William C. & Margaret R. Nelsen  
Michael O'Kane  
J. Stephen Putnam  
Michael Ryan  
Carl & Verna Schmidt Foundation  
Richard Schwab and Katherine Burford  
Peter Scialla  
Doug & Grace Schroeder Scott  
Art Seifert  
David Thebodo  
Douglas G. Wardle

##### Platinum Mortarboard Club - (\$1,000 +)

Anonymous (2)  
Ashok N. Bakhru  
Eleanor & B. Scott Ball  
Mark W. Bates  
Shirli M. Billings  
William C. Bonifield  
Kevin Carroll  
Paul and Diane Cowdery  
Elizabeth A. Crossman  
The Honorable Robert J. Dole  
Ty Exsted  
Lucius and Rhonda Fowler  
Morris J.W. Gaebe  
John and Deb Ganoe  
Barbara B. Hinchey  
Kathleen and Lawrence Horsch  
Jeff Jones  
Daniel & Susan Jorgensen  
Linda and Allan Klinger  
Burt and Ruth Knauff  
W. Patrick and Patricia Lawrence  
Joseph Levy

Joan R. Licursi  
Marco Business Products, Inc.  
Andrew and Dena McKelvey  
Dena and Andrew McKelvey  
Marquita S. McLean  
Jamie P. Merisotis  
Rolf and Ingrid Muehlenhaus  
David Nahass  
William and Mary O'Connor  
Craig Phillips  
Kris Retica  
Ed & Marilyn Rundell  
Patrick Ryan  
Amy Ryan Rued and Jack Rued  
Mim and John Schreck  
Mrs. Jean Forsyth Schulz  
John and Carol Seibert  
Selvyn Seidel, Esq.  
Jane Shackelford  
Seema Shah and Jed Burkett  
Donald U. Smith, III &  
H. Hetherington Smith  
Steve Sperber  
Alan and Barbara Tennesen  
Thomas E. Terry  
John and Lee Thomas  
Kentaro and Florence Umezaki  
Fred & Nancy Vogel  
David L. Warren  
Dr. Susan Gordon Weinberger

##### Gold Mortarboard Club - (\$500 +)

Anonymous (3)  
Barbara E. Arnold  
David and Narissa Bach  
John E. Bierwirth  
Sydney Bullis  
Emanuel Cassis  
Ben G. Crosby  
Deborah Dykema  
Hazen and Kathy Graves  
Isaza Isilda  
Washington State Senator  
Ken Jacobsen  
Andrew Jenkins  
Stephen Wood Kidner and Susan Funk  
Gregg Lausman  
Ilene Levin  
Michael & Susan London  
R. Ma  
Greg Macri, Jr.  
Kenneth Madl  
William B. Marine  
Kay M. Marquet  
Sara A. Martinez Tucker  
Christopher and Ruth McDonald  
Patricia B. Mooney  
Sanathana and Surekha Murthy  
Deborah Myman  
Colleen O'Brien  
Linda Ong Safina & Rosario Safina  
Tina and Michael Palmer  
Ron Perkins  
Ralph & Helen Petersberger  
Bill Quinn  
Robert B. Rasmussen  
Michael and Linda Ryder  
Karen Seitz  
Joel Sheridan & Janet Bohart

Nancy Sheridan  
Frank and Robyn Sims  
David C. & Marijane D. Smith  
Seelochini Somwaru-Liriano &  
Francisco Liriano  
Phillip and Patricia Townsend  
Anthony and Kathleen Tufariello  
Michael A. Vorhaus  
Ruth and Warren Warmka  
George Warren  
Phil & Army Webster

##### Silver Mortarboard Club - (\$250 +)

Anonymous  
Laurel A. Abbott  
James N. & Cleopatra B. Alexander  
Robert and Doris Alin  
Dorothy Barnes-Griswold  
Margaret and Maye Bierl  
Lloyd and Lois Brandt  
Bobby Jo and Bev Brumbaugh  
Bob and Ginger Buehler  
Marie and Anthony Casper  
Mr. Claude Catapano  
Mrs. Gretchen M. Cunningham  
Nina and Robert Cutler  
Mark Davis  
Paul A. Dumdei  
Lisa and James Dummer  
Kent and Katherine Eklund  
Richard Ekman  
Dr. Irving A. & Charlotte Fradkin  
Michael and Susan Fradkin  
Dennis and Renee Franson  
Cindy Cardwell Freeman  
Eugene Frey  
Nancy and Charles Frick  
Marija Futchs Fine & Irwin Fine  
Robin Galanti  
Dort Hamilton  
Larry Hamm  
Hugh Heinecke  
Robert & Severnia Jones  
Irvin and Beth Katz  
David T. Knopick  
Gerald J. Lager  
Rev. Robert P. Lawrence  
Ed Lee, Esq.  
Gary Lewis  
Judith Lewis Logue & Lawrence Logue  
Carol and Joseph Lutgen  
Linda and Michael Mahoney  
Raymond F. & JoAnn M. Matheny  
Barbara McBee  
Celeste McWhirter  
Douglas and Sandra Miller  
Ezio and Vanna Musso  
James and Lisa Newton  
Carol and Jim Oakland  
Michael O'Loughlin  
Tom Olson and Liz Lewis  
Julie Ostergaard  
Keith Peterson  
Audrey & Albert B. Ratner  
William and Sharon Richardson  
Patsy H. Rossow  
Joseph A. Russo  
Mort and Rosemarie Ryweck  
Kathleen Schantz

Scholarship America Staff  
P-L and Richard Schroeppl  
Joyce Smith  
Brian Steinmetz  
Suzanne Nora Johnson &  
Dazvid G. Johnson Foundation  
Tom and Jodyne Tokarcik  
Curtis and Carol Trygstad  
Marjan Vosburg  
Beth Wedum  
Janis and David Weller  
Delores and Chester Whitney  
Margot and Larry Zelenz  
Mark and Amy Zusy

##### Bronze Mortarboard Club - (\$100 +)

Anonymous (9)  
Cary and Paul Albers  
Katherine Allen  
Mark Ames  
Don C. Anderson  
Richard Anderson  
Amy Ashmann  
Katrin Atienza  
Tom Barritt  
Debra Bean  
Carrie Besnette  
Monte Bridges  
Patricia Brown  
Ann and Richard Bryant  
Mr. and Mrs. Dean A. Buresh  
Ms. Deborah Bustin  
Alan Carney  
Jane Chaffee  
Arnaud Charpentier  
Sandy Cheiten  
Claude Chemtob  
Timothy Christensen  
Alan Claypool  
Richard and Lisa Coffin  
William Danforth  
CloEve Demmer  
Harege Dimetros  
Brian L. Donnelly  
Ms. Patricia A. and  
Mr. William P. Donovan  
Dick & Barbara Dystrup  
Bob & Martha Eastwood  
Douglas and Ruthven Farber  
Elinor Ferdon  
William and Joyce Fitzgerald  
Dr. Chester A. Francke  
Eleanor and Michael Fronstin  
Annabelle Fry  
William Frye  
Thomas Fuhrman  
Jerry and Julia Gaff  
Gina Gennaro & David Hough  
Jennifer and Brent Goraczkowski  
Michael Gormalley  
Kamar Green  
William Greenwood  
Marsha Gronseth & Sue Knollenberg  
Renee Harberts  
Lori and Michael Harris  
Harold and Agatha Hebl  
Carolyn and Cyril Heile

*Continued on next page...*



# Scholarship America Donors

...continued from previous page

Mick Hickok  
Marlene and John Hildebrandt  
Robert and Elaine Holman  
Danielle Hyde  
Christy Jensen  
Jacqueline Jensen  
Brian and Stacey Jones  
John Kaminer  
Gina and Kurt Kastel  
Richard and Nancy Keough  
Robert Kessler  
Sue Knollenberg & Marsha Gronseth  
John and Cheri Koch  
Robert L. Koenig, M.D.  
Agnes Kranz  
Neil and Judith Kunze  
Georgine Lacey  
Jeanne Lantzy  
Richard E. Lindstrom  
Pei-loh and Adrian Lo  
Walter and Nancy Lob  
Ian Lowitt  
James E. & Jocelyn M. Lyons  
Mary and Richard Magnier  
Pat & Marvin Meyer  
Warren Meyer & Eileen Rossow  
Betty Millward  
William and Eileen Mueller  
William Muggli  
Eric Natwick  
William Nelsen  
John A. Nelson  
William and Elizabeth Norris  
Deanna Nurnberg  
Jon Oberg  
Kathy and Bernard Olberding  
Ms. Owens  
Gail and John Panner  
Valborg G. Pearson  
Timothy J. Penny  
Dale and Rita Pennybaker  
Ignatius Piazza  
Sara Piekarski  
Lois Rand  
Michael A. Rickert  
Thomas & Mary Pat Ridout  
Brenda Rohlfing  
Jane Schiltz  
Clint and Carolyn Schroeder  
Jon and Dana Schroeder  
Jennifer Scott McBride  
Ralph H. Seifert  
Margaret and Curtis Stolee  
Kari and Michael Strong  
Susan and Douglas Tellinghuisen  
Dan Thompson  
Adam Towner  
Gedney and Emily Anne Tuttle  
Diane Wallace-Booker  
Ms. Patricia S. Walsh  
Lola and Louie Walter  
Richard and Wanda Washington  
Michael Wendel  
Ann Wessberg  
Buster West  
Janet Wexler  
Richard and Sally Williams

John and Joan Winfrey  
Kimberly Wold  
Adele and Steven Yorde  
Randy J. Zellmer

## **Citizens Circle Club - (\$1 +)**

Anonymous (18)  
Shelly and Leslie Adcock  
Martin Alger  
Clifford D. Anderson  
Donna and Robert Andrews  
Kristina Arbogast  
Walter & Laura Aulenbacher  
Dianne Baker  
Melvyn and Elaine Ball  
Amy Ballantino  
Daniel Ballein  
Joyce Barker  
Margaret and William Barney  
Jill Barth  
John and Margie Bauer  
Connie Baumgartner  
Ms. Joan L. Baxter  
Sheila Bayle-Lissick  
Stevonnie Beckett  
Steve Beech  
Bill Benefiel  
Verna Berg  
Susan Berzak  
Cathryn Blaukat  
Suzanne Blum Rahali  
Mr. Tim Booher  
Jennifer Bosser  
Elizabeth Bram  
Chris Bremer  
James Brendel  
Gina and James Bridger  
Kim Brinker  
Liz Bristol  
Tara Brookshire  
Donald Brown  
Shannon Brumbaugh & Heather Mathewson  
Angela Buikema  
Donald and Marilla Burch  
Shuan Butcher  
John and Sandra Button  
Tom and Jackie Carnahan  
Maureen and Jeffrey Carpenter  
Stuart and Lovey Carroll  
Kate Cervi  
Michelle Chae  
Sandra Cohen  
Nancy and Frank Colizzo  
Mary Coppola  
Tom Corcoran  
Anne Costello  
Sheila Coughlan  
Stewart T. Coulson  
Whitty Cuninggim  
Alisa Cunningham  
Silvana Cusimano  
Kareen and Lee Daby  
Patricia and Russell Delaney  
Mary and Leonard DeMello  
Robyn DeWolf Lee  
Enid Diamante  
Julie Diede  
Kelly DiNardo

Stefanie Dobrin  
Jean Donatiello  
Julia Donoghue  
John and Gaile Drazenovich  
Mary Ellen Driscoll  
Hayden Duncan  
Jaddie Edwards  
Steven Ehrlich  
Isabel Einzig  
Marion Eklund  
Francesca Elroy  
Andrew Elsworth  
Evie Erdman  
Carol Erickson  
Carol Estocko  
Cara Familet  
Elisa Feola  
Cathy Ferrone  
Scott & Deborah Fichtner  
A. Florian  
Bobby Fong  
Bob Frantz  
Patricia and Peter Frechette  
Renee Frederickson  
Rosemarie Patricia Freiert  
Janice Fronczkiewicz  
Klaus Fuechsel  
Donna Fugate  
Nicol Furlong  
John Gaddo  
Dawn Gargiulo  
Perrie Garland & Michelle Keith  
Anne Garrelts  
Deb and Greg Gebeke  
Philip George  
Christine Gerber  
Carol Gerhardt  
Michelle Gerhardt  
Noemie & Antoine Gerschel  
Alecia Gersh  
Tricia Gifford Kirk  
Cynthia Goodstein  
Jeff Goolsbey  
Carroll E. Greenwood & Natalie P. Greenwood  
Sandra Greer  
Eva-Marie Grochow  
Seymour Gross  
James Guzzo  
Corrin and Paul Hagen  
Nadine and David Haglin  
Floyd L. Hair  
Kathryn Hall-Boyer  
Kathy Hammell  
Richard Hardy  
Douglas and Nina Harr  
Kelly Harris  
April Harvey  
Kia Heavey  
Steven and Chris Hebl  
Susan Helder  
Wendy and William Helgeson  
Judy Helmeke  
Kathy and A. Wm. Hendrickson  
Terry and Anni Heyer  
Shellee Hintz  
Edna May and Harold Hirshman  
Suzanne Hofé  
Elizabeth A. Holcomb

Dorothy Holland  
Darlene Horning  
Margaret Hospodar  
Barbara and Paul Houchen  
Jeffrey and Cyndee Howell  
Karen L. Huhn  
Mr. Robert C. Hunter  
Steve Hunter  
Jill Imossi  
David Isaza  
Britt Jacobsen  
Kiri Jacobsen  
Landon Jacobsen  
Maren Jacobsen  
Herman James  
Keith and Barbara Johannes  
Linda and John Johnson  
Marjorie Johnson  
Marlys C. Johnson  
Nancy Johnson  
Monica Jordan  
Sandra Joseph  
Bruce Kaplan  
Margaret and Robert Kendall  
Keith and Kathleen Keogh  
Maxine and Thomas Kingsley  
Terri Kirby  
Tanya Kiskanyan  
Mr. Theodore Klein  
Steven Klepszynski  
Tracy Knofla  
Rikio Konno  
Olivia and W.C. Kormeier  
Eugenia Koudanis  
Delores Krantz  
Mark Kucharski  
Anita Lagos  
David B. Laird, Jr.  
Paul Langrock  
Arne N. Langsjoen  
Caris Lanson  
Lorna Larson  
Preston Laugheed  
Leslie Lawson  
Dawn Lehtinen  
Carole Levine  
Teresa Lickliter  
Yee Lin  
Erika Lindgren  
Barbara Linsley  
Steven and Susanna Lorch  
Ms. Sarojini D. Lotlikar  
Jeanie Lovell  
Josie Lowe  
Kristen Luther  
My Luu  
Cristina Maduro  
Michael Magee  
Mark Malmberg  
Daphne Mangroo  
Michael Marafioti  
Catherine Marten  
Robert L. Mason  
Jaimie Mattes  
Connie McCormick  
Lucy and Yvonne McIntosh  
John Meade

Continued on next page...

# Scholarship America Donors

...continued from previous page

Annette and Robert Meeks  
Analisa Meier  
Michele Meises  
Roberta P. & Robert F. Melville  
Brent Merlis  
John and Janet Metcalfe  
Nancy Metzger  
Mary Lynda Meyer  
Carrie Micheau  
Tomohiro Mikajiri  
Cynthia Miller  
Sandra and Meredith Miller  
Shanley Miller  
Alyce and David Millson  
Ken and Dasha Millson  
B. and Steven Mincer  
Alison and Louis Minella  
Nancy and Ron Mitchell  
Reesa Motley-McMurtry  
Joseph Mulé  
Kevin and Rebecca Murphy  
William H. Myers  
John Nazarian  
Alice Nelson-Lindall  
Noelle Neuwirth  
Susan C. Nichols  
Maryanne Nolan  
Quinn Nystrom  
Suzanne Oberly  
Edward Oblas  
Karen O'Brien  
Morgan and Betty Odell  
Theresa Olberding  
Waldine and Sandra Olson  
Judy Olsson  
Rebecca O'Neill  
Lisa Otto  
Tecla Palli-Sandler  
Erle Palmer  
Tracy Panzarella  
Kevin Parra  
Janice Partridge  
Kathleen Paskert  
Lloyd and Beverly Paulson  
Stephen Penna  
Mary Lou and Ralph Penner  
Tami Petersen  
Carol and Allan Peterson  
Mr. Ellery Peterson  
Jonathan Phillips  
Sandra and Gary Phillips  
Michael and Carolyn Pianin  
Thomas Picard  
Mr. Mohammad R. and  
Ms. N. G. Pishdad  
Debra Platek  
Stephen Policano  
Susan and Bruce Ponwith  
Natalie Posteau  
John and Nancy Price  
Daniel Quesada  
Luciana Racine  
Jeffrey Ragon  
Kathleen Ranowsky  
Kris Rausclenberger  
Charlene Raynor  
Noma Richardson

Constance and Stephen Ringlee  
Pamela Rixe  
James K. Robinson  
Sherry Robinson & James Adamson  
Gerald Rounds  
Jack and Amy Rued  
Ranta Russell  
Rebecca Russo  
Jane Samz  
Stephanie Sanchez  
Sylvia Santos  
Gail Schave  
Mike Schwab & Rebecca Rose  
Terre and Mike Seide  
Ylissa Sekuler  
Chander and Anita Sem  
Glenda Severson  
Carleen Shaw  
Edie Sher  
Dan Simpson  
Rochelle Siskind  
Joan Slebos  
Alvin Sluiter  
Dale Smith  
Dee and Newton Smith  
Laura Smith  
Vickie and Raymond Sogard  
Sandra Spinellis  
Linda and Neil Stangel  
Eugene C. Struckhoff  
Struckhoff Family Foundation  
Lynne Sundblad  
Amy Terrero  
M. T. Testoni  
Jodi Thieman-Derrick  
Alfred Thomas  
Gregory Thompson  
Lucy Tinkle  
Peter Travnicek  
Lyn and James Vavreck  
Karina Velasquez  
Theodore and Marguerite Vessey  
Michelle Wagner  
Michele Waldman  
Saudee Walker  
Lynn Waska  
Barbara and Richard Weber  
Joan and Richard Weber  
Dana Wedum Kennely  
Mary Weinand  
Gary Weinstein  
Diane Wempen  
Ron Werth  
Nancy Wilkins-Diehr & Dan Diehr  
Dr. Carole A. Williams  
Stephen Wills  
Riva Wine  
Dana and Helen Winslow  
Dolores Wisdom  
Betty Sue and Leo Wolf  
Jane Yanulis  
Sari Zalesin  
Christina Zangari  
Cecile Zinberg  
Brian Zola

## NATIONAL ORGANIZATION DONORS Gifts made to Scholarship America between July 1, 2003 and June 30, 2004.

**\$500,000 +**  
Atlantic Philanthropies, Inc.  
AXA Foundation

**\$250,000 +**  
Easy Spirit  
USA Funds

**\$50,000 +**  
Lumina Foundation for Education  
Time Inc. Home Entertainment

**\$25,000 +**  
AmericInn International, LLC  
Best Buy  
Fidelity Investment Charitable Gift Fund  
Mercedes-Benz USA, LLC  
SUPERVALU Foundation

**\$10,000 +**  
The Fluor Foundation  
GES Exposition Services  
The Sallie Mae Fund  
The Seinfeld Family Foundation  
Nathan Tannenbaum Foundation, Inc.  
Trans World International, Inc.  
Wardle Family Foundation

**\$5,000 +**  
Knight Vision Foundation  
Lighthouse Underwriters, LLC  
Mehigan Family Trust  
Mostyn Foundation, Inc.  
New Century Mortgage Corporation  
Raymond James Charitable  
Endowment Fund  
Carl & Verna Schmidt Foundation  
Stronge Family Foundation  
Surefire Marketing, Inc.  
Target Corporation Family of  
Giving Programs

**\$1,000 +**  
Aetna Foundation  
AMS, Inc.  
Cargill, Inc.  
Robert W. Carlstrom Co., Inc.,  
General Contractor  
Citigroup Foundation  
Frances Sarkisian Trust  
Gannett Foundation, Inc  
Gemini Group, Inc.  
GSF Mortgage Corporation  
Henri Bendel  
Hickory Tech Corporation  
Howard & Frances Vaughan  
Charitable Foundation  
Johnson & Wales University  
Lehman Brothers  
Levi Strauss Foundation  
Lilly Endowment, Inc.  
Marco Business Products, Inc.  
Matlin Foundation

McNeilus Steel Inc.  
Morgan Stanley & Co. Inc.  
The National Society of  
High School Scholars  
Nicollet County Bank  
Nightlife Enterprises, LP  
North Star Consultants, Inc.  
Pell, Inc.  
Powell, Goldstein, Frazer & Murphy, LLP  
Ricoh Corporation  
Ronetco ShopRite  
The Tidings Corporation  
Weyerhaeuser Company Foundation

**\$1 +**  
Air Water Snow Marketing  
Alexander Hotel  
AMD Matching Gifts Program  
Augustana College  
Bank of America Foundation, Inc.  
Bodhimind Foundation of USA, Inc.  
Calvin Coolidge Alumni  
Association, Inc.  
Centurion Printing, Inc.  
Charities Funds Transfer  
Counseling Services of Southern  
Minnesota, Inc.  
Davis Research LLC  
Davisco Foods International  
Envision: Design That Works, Inc.  
Fabricare Super Laundromat  
First Congregational Church  
The First National Bank of St. Peter  
Fluor Enterprises, Inc.  
Follett Corporation  
G J Products  
GCA Trading Company, LLC  
The Huisling Foundation  
Independent Colleges of Washington  
Indiana Dollars for Scholars  
International Monetary Fund  
J.P. Morgan Chase Foundation  
J.S.J. Consulting  
Jarraff Industries, Inc.  
JetSet Cruise and Travel  
Jomma, LLC  
Lions Club of Malta  
Madison Management, Inc.  
Marco Business Products, Inc.  
McGraw-Hill Companies, Inc.  
Myman, Abell, Fineman, Greenspan  
& Light, LLP  
Nelson Printing Co.  
Office of the Comptroller  
of the Currency  
Paradigm Solutions Corp.  
Pfizer, Inc. Corporate Giving Program  
Prentice Hall Publishers  
Project Cope / Dollars for Scholars  
Robert and Ruth Glaze Foundation  
RoperASW, LLC  
RWC, Inc.  
Scheels All Sports  
Schwab Fund for Charitable Giving  
Spriggs & Hollingsworth  
Strategic Finance & Management, LLC  
Struckhoff Family Foundation

Continued on next page...

# Scholarship America Donors

...continued from previous page

Thomson Learning  
Thomson West  
Truth Consulting NY Inc.  
Valley Automotive Group  
Washington Mutual  
Waterloo-Cedar Falls  
Dollars for Scholars  
Words & Numbers  
Wright & Mines, Inc.

## REGIONAL DONORS

### California Dollars for Scholars

#### Organizations

Best Buy  
The Capital Group Companies, Inc.  
Early Productions, LLC  
The Fluor Foundation  
The James Irvine Foundation  
Scholarship America  
Toyota Motor Sales, U.S.A., Inc.  
Wells Fargo Foundation

#### Individuals

Anonymous (22)  
David B. Ashe  
Jason Axe  
Jeannette Beaner  
Sydney Bullis  
Kathleen Cady  
Donna Carter  
Denise Cassin  
Hank Castillo  
Susan Cavaliere  
Gerald and Susan Cornelison  
Lee Ann Derkacs  
Linda Derkacs  
B. J. Doerfling  
Julia Donoghue  
James Edgerton  
Frank L. Ellsworth  
Catherine Elsbree  
Carol Erickson  
Terri Fauchier  
Bert and Jean Fraleigh  
Diane E. Geiser  
Heather Graham  
Kirsten Harken  
Richard and Arlene Havel  
Dorothy Herbst  
Anita Housley  
Laurie Hurl  
Krista and Jeffrey Johnson  
Pamela Miller Johnson  
Rose and Robert Langenberger  
Eileen Lapish  
Kara Lapish  
Tavis Larkham  
Selia Leal  
Winnie Leung  
Barbara Linsley  
Judith Lewis Logue  
Janet Lund  
Darrell and Susan Lynn  
Lisa and Thom Mrozek  
Francis and Elin Mrozek

Brian Nettleton  
Peter Nishita  
Northrop Grumman  
Morgan and Betty Odell  
Barbara Pederson  
James F. Ragan  
Michelle and Terry Roberts-Wells  
Edgar and Elaine Robinson  
Nancy Ronne  
R. Louis Salaber  
P-L and Richard Schroepfel  
Andrea Schullo  
Patricia Stuhff  
Barbara D. Sweetland  
Catherine Thomas & Edward Nash  
Kurt Traverse  
Curtis and Carol Trygstad  
Michael A. Vorhaus  
David and Kimberly Ward  
Geraldine Washington  
Western Asset  
Ann Worley

### Florida Dollars for Scholars

#### Organizations

Atlantic Philanthropies, Inc.  
Best Buy  
The Coca-Cola Company  
Midwest Title Guarantee Company  
of Florida  
Morrison Family Foundation  
Rush Foundation Inc.

#### Individuals

Anonymous  
Eleanor & B. Scott Ball  
John and Betty Beal  
James and Anne Beltz  
Alfred and Tony Cady  
Robert and Claire Casale  
Bob DeArmond  
Douglas Esson  
David and Beverly Fulcomer  
David and Shirley Hubers  
John and Nora Kolmer  
Lawrence and Cynthia Lane  
Malcolm and Sonia McDonald  
Ronald and Diane McGinty  
Ken & Sue Murray  
Christopher and Sara Putnam  
William and Carol Queenan  
Donald and Margaret Redlinger  
Donald and Angela Smith  
Howard and Elaine Specter  
Jack and Deta Stafford  
Ken and Kitty Stark  
Dick and Marie Stonesifer  
John and Pat Thornton  
Hicks and Evelyn Waldron  
Thomas and Mary Jane Wall  
Thomas and Anne Wamser  
Joseph and Rosemary Wortman

### Illinois Dollars for Scholars

#### Organizations

Atlantic Philanthropies, Inc.  
AXA Foundation  
Illinois Tool Works, Inc.

Fabricare Super Laundromat  
Nicol Gas

#### Individuals

Anonymous (2)  
Barbara E. Arnold  
David and Narissa Bach  
Cynthia Miller

### Indiana Dollars for Scholars

#### Organizations

Atlantic Philanthropies, Inc.  
Ayres Foundation, Inc.  
Lilly Endowment, Inc.  
Lumina Foundation for Education  
Nims Associates, Inc.  
The Sallie Mae Fund  
USA Funds

#### Individuals

Robert and Mary Ellen Ballard  
William C. and Donna Bonifield  
William and Lisa Booth  
Lori Herbst Brown and Timothy Brown  
Joyce Chapman  
Steve and Bonita Clinton  
Larry and Sue Coffin  
Charles and Julie Costa  
Carl and Carolyn Dalstrom  
Lyle and Dorothy Fogel  
Nancy and Charles Frick  
Leon Gelman  
Scott and Penny Gillie  
Sue Anne and Richard Gilroy  
Robert and Melody Grand  
Marjorie and Erland Hedegard  
Anne Hoover  
Mark Kichler  
William and Linda Lamberjack  
Clara Lou and Dale Milligan  
David C. and Susan Murray  
Diane and Jeff Orians  
Walter and Sandra Pieniazek  
Cynthia and Douglas Pierce  
Gwen and John Poncher  
Derek and Laura Price  
Paul F. Robertson  
Stuart and Shirley Showalter  
E. Paul Smith  
James and Margie Smith  
Marilyn Smith  
Dana and Nelda Snider  
Dave and Ann Sternberg  
Sue and Robert Supple  
David Wagner  
Susie Warner  
James and Grace Zender

### Iowa Dollars for Scholars

#### Organizations

Air Quality, Inc.  
American Society of  
Association Executives  
Aspro, Inc.  
Bank of America  
Basic Materials Corp.  
EMC Insurance Companies  
John Deere Community Credit Union  
Matt Blair Celebrity Promotions, Inc.

Pioneer Hi-Bred International, Inc.  
Speer Financial, Inc.  
Stamats Communications, Inc.

#### Individuals

William K. & Joyce A. Appelgate  
John and Sondra Carver  
Debbie and Wallace Craig  
Richard Damrow  
William and Kathie Decker  
Janice Friedel  
Douglas Getter  
Richard and Julie Hanson  
Kirk and Julia Hayes  
Todd and Sarah Helle  
Alan and Melinda Huisinga  
Linda and Allan Klinger  
Kevin and Linda Koester  
Kay Kretsch  
Timothy and Sarah Krumm  
Shaner and Barbara Magalhaes  
J. C. Miller  
Greg Nichols and Dawn Connet  
Mary Ann and Charles Peters  
Judi Pierick  
Randy and Carol Pribyl  
Michael A. Rickert  
Richard Schwab and Katherine Burford  
Michael Termini and Naida Brown  
Gary and Maurine Timmer  
Thomas and Karla Willoughby

### Minnesota Dollars for Scholars

#### Organizations

American Express Financial  
Advisors Inc.  
American Express Foundation  
Associated Bank  
Capital Investment Realty, Inc.  
Ceridian  
CMC, Inc.  
Datacard Group  
Diversified Acquisitions, Inc.  
Dunbar Development Corporation  
Ebenezer  
Great Lakes Management Co.  
Griffiths Foundation  
Otto Bremer Foundation  
Scholarship America  
Skewes, Klosterbuer & Vajgrt L.L.P.  
Vesco, Inc.  
Wedum Foundation, Inc.  
Wells Fargo

#### Individuals

Anonymous (2)  
David and Narissa Bach  
Carol Bannick  
Dawn and Mark Bestick  
Deb and Allen Black  
Jill Bollettieri  
Agnes Brandon  
Josh Burke  
Bill & Cathy Carlson  
Christoffel & Elliott, P.A.  
James Christoffel  
Miles and Cheryl Cohen

Continued on next page...

# Scholarship America Donors

...continued from previous page

Paul & Kathleen Connolly  
Ted and Kathleen De Lancey  
Ms. Patricia A. and  
Mr. William P. Donovan  
Paul A. Dumdei  
Frank Dunbar  
Michael and Elizabeth Endersbe  
Dr. Irving A. & Charlotte Fradkin  
Deborah Grocholski  
David Gulliver  
Rosemary Hagen  
Floyd L. Hair  
De Ette Hall & Paul Wiberg  
Larry Hamm  
Ann Hinrichs  
Ellen Horrow  
Herald Johnson  
Larry Johnson  
Marlys C. Johnson  
Mayo Johnson  
Claire Kolmodin  
Don and Winifred Krueger  
Sarah and Steven Kumagai  
Arne N. Langsjoen  
Daniel and Jeannine Lindh  
Phillip and Susan Little  
Michael & Susan London  
Raymond F. & JoAnn M. Matheny  
Timothy McDonnell  
Ruth Meger  
Ash Mishra  
Rolf and Ingrid Muehlenhaus  
Joyce and James Nedbalek  
William C. & Margaret R. Nelsen  
Barbara and Raleigh Nelson  
Alice Nelson-Lindall  
Carolyn and David Olson  
Marie Opatril  
Howard and Amy Paster  
Lloyd and Beverly Paulson  
Mignon and Roy Randall  
Claudette Rasmussen-Trcka  
& Robert Trcka  
William and Sharon Richardson  
Brent Robbins  
Ed & Marilyn Rundell  
Seema Shah and Jed Burkett  
Dayton and Ruth Soby  
Andrew and Michaeline Stanczak  
Franklin and Mary Lou Starke  
Lois and John Stilwell  
Evelyn Suhr  
Kellie and Richard Tesch  
Sara Torvik  
Gedney and Emily Anne Tuttle  
Eline Tvedt Iverson  
Christine Walsh & Dean Townsend  
Anna Wark  
Ashley Warren  
John and Beth Wedum  
Johnnie Whitehead  
John and Rosalie Wosepka

## **Nebraska Dollars for Scholars**

### Organizations

Kinman-Oldfield Family Foundation  
National Education Loan Network, Inc.

The Nebraska United Methodist  
Foundation  
Qwest Foundation

### Individuals

Donald Bryant  
Douglas and Toni Carlo  
John and Judith Crowley  
Virgil Horne  
Thomas and Carol Krepel  
Janis and John McKenzie  
Maxine and Francis Moul  
Mr. and Mrs. Merle Sarver

## **New England Dollars for Scholars**

### Organizations

Andover Dollars for Scholars  
Avon Dollars for Scholars  
Beverly Dollars for Scholars  
Boehringer Ingelheim  
Pharmaceuticals, Inc.  
Boothbay Regional Student Aid Fund  
Boston Foundation  
The Community Foundation for the  
National Capital Region  
Stuart Comstock-Gay &  
Lucy Comstock-Gay  
CSF of Easthampton  
CSF of Fall River  
CSF of Marlborough  
CSF of Somerset  
CSF of Stafford Springs  
CSF of Wakefield  
Liz Claiborne Foundation  
DB Mart #849  
Donald A. Fisher CSF  
The Education Resources Institute  
Ellington Community Scholarship  
Association  
Fairhaven Associates  
North Reading Dollars for Scholars,  
CSF  
Nyack College  
RWC, Inc.  
The Sallie Mae Fund  
Somerville High School Scholarship  
Foundation

### Individuals

Anonymous (2)  
Laurel A. Abbott  
Judith Allen  
Carolyn Anderson  
Betty Athanasoulas  
William and Margaret Barney  
Mary Fiske Beck  
J. Neil and Cynthia W. Benney  
Terri Beyer  
Richard Bradley  
Patricia Brennan  
Judith Burrows  
Jim Burrus  
Norris H. Bussell  
Sarah and Charles Calley  
Nancy Carriuolo  
Hugh and Judith Chapin  
John Coffin  
Ann S. Coles  
Jeff Connors

John Cox  
Linda Crawford  
George H. Cross  
Maxwell and Phyllis Cutler  
Norma and Ronald Daviault  
Lenore DeLucia  
Sally and Robert Dietrich  
Neil F. Doherty  
Marguerite and Robert Dole  
Mary Doorley  
Brian Duncan  
David and Janet Duncan  
Debbie Duncan  
Wayne K. Durfee  
Ruby and C. Cabot Easton  
Richard Eaton  
Gayle Esterly  
Nelson Everts  
Lewis Feldstein  
August Ferretti  
Joshua Freeman  
Howard Friedman  
Cameron Gardella  
Gerald and Jane Gaughan  
Alan and Gail Goddard  
William Goetz  
John W. Graham  
Colby Hewitt, Jr.  
Claire and Jim Hickey  
Patricia Hogan  
Susan Hohl  
William and Karen Holland  
Ellen and Ernest Huber  
William H. Hurry, Jr.  
Samuel Hyman  
Arturo and Susan Iriarte  
Chris Irving  
Maura Johnson  
Terri Kirby  
Robert Knight  
Adrienne Krassner  
Jay Landers  
Jean and Bradley Leach  
Ingrid and Regis Lemaire  
Ann Lingos  
Debbie Lingos  
Greg Macri, Jr.  
Maguire-Maguire  
Linda and Michael Mahoney  
Sheila Maniam  
Madelaine Marquez  
Andrew Maxfield  
Virginia Maxfield  
Peter Mazareas  
Jolene and John Mitchell  
Kevin and Melissa Morin  
Patricia and Eugene Mooney  
Walter and Elizabeth Moulton  
Richard C. Munn  
Nellie Mae  
William C. & Margaret R. Nelsen  
Arja and Randall Neukam  
Marie O'Malley  
David N. Page  
John Pepper  
Jan Peters  
Kristin Pineau  
Ray Plante  
Sarah S. Powers

Maryann Quigley  
Peter and Suzanne Read  
Pat Rooney  
Thomas E. Ruggiero  
Barbara W. Snelling  
Patricia Sweezey  
Janet and Bruce Taylor  
Joshua Tetrault  
Stanley Tetrault  
William and Patricia Tvenstrup  
Bonnie and James Waldron  
David and Janie Webster  
Scott Webster  
Robert and Geraldine Weeks  
Sidney Whelan  
Dr. Carole A. Williams  
Marilyn Wood  
Ann Worley

## **New York Dollars for Scholars**

### Organizations

AXA  
The Bristol Fund  
Equitable  
The Gorman Foundation  
Nationwide Financial  
Pfizer, Inc. Corporate Giving Program  
Planned Results, Inc.

### Individuals

Anonymous (3)  
Jose Acevedo  
Stanley Achilles  
Rashain Adams  
Sonny Ago  
Daniel Akins  
Jennifer Allman  
Victor Almonte  
Gloria Anderson  
Kenneth Ansley  
Tearesa Archer  
Mirza Argueta  
Sabrina Aristizabol  
Barbara E. Arnold  
William Artiga  
M. Artz  
Doug Atwood  
Lauren Azuloay  
Baffington  
L. Baldwin  
Elizabeth Barnes  
Dianne Baron  
Rebecca Barrett  
Jenn Battaglia  
Stevonnie Beckett  
Jacquelin Belardo  
Marily Bell  
Sharal Belten  
Robin Beltzer  
Bill Benefiel  
Diana Benjamin  
Benny  
Phyllis Berman  
Mr. Bernard  
Pat Black  
Elizabeth Blajantwater  
Tony Blake

Continued on next page...



# Scholarship America Donors

...continued from previous page

Karen Blank  
Patricia Bond  
Cristal Booker  
Novella Boyce  
Katie Bradley  
Lisette Britt  
Emily Broudy  
Constance Brown  
Hope Brown  
Amy Bryan  
Gregory Bryant  
Gwen Buchanan  
Edward Budnikas  
Darlene Buffalo  
Inez Burges  
Marian Burnbaum  
Debra Cabrera  
Euoqule Cabria  
Michelle Calo  
Lisa Camorza  
Rebecca Cantry  
Kristen Canzano  
Fernando Cardenas  
Vivia Carr  
Glenn Carrascoso  
Eileen Castellanos  
Cristina Castillo  
Helen Cavounes  
Jane Celwyn  
Teolinda Cepeda  
Charlie  
Ann Chase  
Dania Cheddre  
Ron Cheddre  
Lawrence Cheery  
Leolia Chestnut  
Beverly Christian  
Miriam Ciarcia  
Moustaplia Cisse  
Darlene Clarke  
Diedre Clemens  
Tony Clomax  
Lorraine Clute  
J. S. Colletti  
Nicky Collington  
Amy Colon  
D. Consalvo  
Mary Coppola  
Sheila Corbett  
Sheila Coughlan  
Louisa Cox  
Daniel Creange  
Jose Cueto  
Bryan Cumberbatch  
N. D'Augusta  
Alicia David  
Victoria David  
Eugene Davis  
Geneva Davis  
Maureen Davis  
Hadassah Deaz  
Eileen Delacruz  
Luisa Delamadria  
E. Delerme  
Pat Delgado  
Victor Delgado  
Anael Delice

Dorothy Denburg  
Joe Dens  
John DeRosso  
James J. Devine, Jr.  
Natalie Dhanooolal  
Karin Diamond  
Luz Diaz  
Lenora DiBart  
K. Dichel  
Dr. Doni  
Debra Donlon  
E. Downs  
David and Barrett Dunn  
Rachel Durst  
Elizabeth Echeuairia  
Linda Eduuands  
Francesca Eleyei  
Shelly Ensign  
Joyce Espiritz  
Venera Esposito  
Gail Farley  
Ralph Farreno  
Tao Fei  
Natalie Feldman  
Constance Fenton  
Bob Flacke  
Teresa Flemming  
Diana Florrover  
Jennifer Flynn  
Michael Franzese  
Abigail Freeland  
Arthur Friend  
Bill, Mary and Terry Frizzle  
Luisa Fuentes  
Paul Fuller  
Cayalo Galeano  
Mike Gallagher  
Tara Galoriele  
Rhonda Garnett  
Elayne Garrett  
Carol Gerhardt  
Michelle Gerhardt  
Anthony Gerone  
Pete Gifford  
Kerri Gillette  
Cindy Glanzrock  
Mavcie Glick  
Rafale Gomer  
Shirley Gordon  
Edward and Pauline Gowen  
Gavin Gray  
Michelle Green  
Allen Greenburg  
Marvin Greene  
William Greenfield  
Elmer Grijalva  
Santiago Grijalva  
Billy Grove  
Suzanne Guard  
Kathy and Karl Guenther  
Jerry Guepson  
Shaun Gunning  
Carlos Guzman  
Jeffery Handy  
L. S. Harris  
R. Harz  
Phil and Tricia Hemery/ Oppenheimer  
Funds  
June Hendricks

Katherine Hendry  
J. Henkel  
Asha Henry  
Sandra Heron  
Jake Hobson  
Valinda Holmes  
John Horton  
Roslind Horton  
Kay Hotaling  
Berice Hudson  
Marsha Hudson  
Eddie Hunt  
Mame Hunt  
Enid Hunter  
Melvin Hurtt  
Beth Icellene  
Jill Imossi  
Judith Iroivaray  
Sandy Ismay  
Rhonda Jenkins  
Dr. Jensen  
Ginger Johnson  
Keith and Carol Johnson  
Wendy Johnson  
Valerie Jones  
Sandra Joseph  
Yana Joseph  
Jovenny  
Peggy Kaisi  
K. Kaweth  
Bashir Khan  
Mary Khan  
T. Killeen  
Nancy Kim  
H. Kinard  
Debbie Kirby  
Liana Klippel  
Kara Korkus  
Erin Kravitz  
Nicholas B. Kuckel  
Pinny and George Kuckel  
Brenda Kulenski  
Dr. C. Kwon  
Vesna Lakic  
Jim Lally  
Elizabeth Landau  
Grace Langs  
Sing Lee  
Amanda Leiva  
Ianisha Lesane  
Diana Lichter  
Thomas J. Lynch  
Michelle Lissaint  
Heather Loeffler  
Roza Loziner  
Thelma Lyle  
Lisa Macalaso  
Louise Macleod  
Pete Maddahi  
Elizabeth Malahro  
Gary Mansfield  
Kris Marames  
Teresa Marriner  
E. Martinez  
Thelma Mason  
Carol Massou  
Anthony  
Joanne Mathews  
Pamela Mathews

Claude Maxwell  
Jim McGovern  
Frank Meacogaihno  
Jacqueline Meekins  
Analisa Meier  
Roberta P. & Robert F. Melville  
Michelle  
Audrey Miller  
Doris Miller  
Paulette Miller  
Nick Moles  
Christina and William Monroe  
Susan Montesinos  
Dianne Moore  
Eld Moore  
Frances Moore  
Joan Moore  
Kenard Moore  
Myrie Moore  
Patrich Moore  
Sheryl Moore  
W. I. Moore-Deacon  
Kimberly Morehouse  
Jacob Morel  
David Morris  
Britta Muehlbach  
Angel Muniz  
Wilson Munoz  
Frances Murphy  
Enrique Najera  
Ezra Nanton  
William C. & Margaret R. Nelsen  
Constantine Nestoras  
Katerina Nestoras  
K. Oliphant  
Darryl Opdahl  
Juan Ortis  
George Osorio  
Neil Osorio  
Tania Osorio  
Wanda Osorio  
Morton Owens  
Jonathan Padilla  
Geniece Paeifici  
George Palamara  
Susan Palmer  
Carmen Paredel  
Tracy Parzarella  
Kathleen Paskert  
Patricia Pasquale  
Moris Patin  
Carmen Patrick  
Kerri Patrick  
Shantel Patterson  
Jonathan and Holly Pawlika  
Nancy and James Pawlika  
Delores Payne  
Aych Peikin  
Jessi Peking  
Stephen Penna  
Eduardo Perez  
Frank and Gail Perretta  
Christine Persaud  
L. Persaud  
Maira Persico  
Patricia Phillips  
Nicio Pichardo

Continued on next page...

# Scholarship America Donors

...continued from previous page

Brendan Pierpaols  
Grace Piggy  
Yolanda Pitt  
Tanya Pollned  
Carol Price  
George Pring  
Gail Purcell  
Martin Putsos  
Cersie Quill  
Milee Quirci  
C. K. R  
Anton Raffington  
Janett Raffington  
Michael Raffington  
Jeffrey Raggon  
Arifur Rahman  
Dr. G. Ray  
Keri Regan  
Lauthie Reyes  
Stephanie Reynolds  
Aniss Rhaman  
George Rhinehart  
Bernard Riardson  
Curtis Rias  
Lynn Richard  
Ali Rifai  
Kevin Riley  
Emeirre Rivera  
Liz Rivera  
Jackeine Rnblick  
Darrell Robinson  
Yunerys Robles  
Domingo Rodriguez  
Milagros Rodriguez  
Yesenia Rodriguez  
Sandy Rogan  
Cristina Rojas  
Gloriree Rojas  
Ilona Roman  
Madison Roman  
Varda Ronen  
Jerry Rosa  
Samery Rosa  
Patricia Rost  
Sheley and James Rouillier  
Loida Ros  
Emily Ruben  
Julio Salguero  
Mickey Sanchez  
Azreen Sarker  
Miraz Sarker  
Rudy Sasalhine  
Jennifer Sayers  
Gail Scharre  
Jeanne Schroepffel  
P-L and Richard Schroepffel  
Eleanor Scott  
Marcy Scott  
Elise Serbaroli  
Edward Shafer  
Gregory Shanck  
Michael Shappell  
Mozammel Sharker  
Megan Sidan  
Bryan Siegel  
Furu Siere  
Ed Silverman

Crystal Simon  
Jerome Simon  
Martin Simon  
Sandra Simon  
Santrice Simon  
Tanisha Simon  
Eddie Singleton  
Nancy Sinopoli  
Sandra and Don Slonosky  
Dorothy Smalls  
Chene Smith  
Dale Smith  
Glenda Smith  
Michael Smith  
Raymond Smith  
Renasia Smith  
Tai-Sheba Smith  
Rodryo Solnzor  
Mark Somersel  
Koustantinos Spanos  
LaToyia Spencer  
S. Spireli  
Schenelle Sprosta  
Susan and David Stamp  
Gregory Stathopoulos  
John Stathopoulos  
Harris Stathopoulos  
Allan Strauss  
Carolyn and Thomas Streiferdt  
Charmelle Streiferdt  
Melanie and Thomas Streiferdt  
Shawn Streiferdt  
Thomas and Carolyn Streiferdt  
Cleo Stroud  
Nieve Suero  
Michelle Sussan  
Karen Szuveh  
Toky Tanjil  
Juan Tavarez  
Janarys Tavecas  
Vivian Taylor  
Shartesh Thacher  
Dara Thagouras  
Rudy Thomas  
Ral Torres  
Cathy and James Trowbridge  
Donna Trowbridge  
Lynn and Gary Trowbridge  
Curtis and Carol Trygstad  
Tony Tulumello  
Alicia Ubira  
Manuel Valdez  
Connie Valentine  
Contueti Valentine  
Cheryl Vanslyke  
Teresa Varga  
Angelina Vazquez  
I. Vernon  
Ad Volpe  
Ahenbut Walker  
G. Wall-Mobley  
Ching Wang  
Gloria Ware  
Kristine Wares  
Bryan Washington  
Norman Washington  
James West  
Ann and William White  
Marrina White

Rich White  
Wendy Whiteside  
Derek Whitter  
Anita William  
Michael Williams  
Oneil Williams  
Anthony Wilson  
Shirley Wilson  
Heather Winnicki  
Francire Witle  
Jason Wolfe  
Santana Wolfe  
Susan and David Wood  
Ann Worley  
Cauleen and Kevin Wright  
Doris Wright  
Kevin and Cauleen Wright  
Wanda Wright  
C. Zahn  
Hooo Zarate

## **North Dakota Dollars for Scholars Organizations**

Brady Martz & Associates-Minot  
Cloverdale Foods Company  
Cliff & Gladys Wold Family Fund  
Dawson Insurance  
Eide Bailly, LLP  
First State Bank-Arthur, Buffalo,  
Casselton  
Forum Communications Foundation  
Garrison State Bank  
Goose River Bank-Mayville & Hillsboro  
Gremada Industries, Inc.  
MDU Resources Foundation  
Microsoft  
Minot State University  
Morgan Stanley & Co. Inc.  
Noridian  
Otter Tail Power Company  
Scheels-Fargo, Grand Forks, Minot,  
Bismarck  
State Bank & Trust  
Union State Bank-Hazen

## **Individuals**

Anonymous  
Robert and Doris Alin  
Marlene and Curt Almie  
Boyd and Shirley Anderson  
Judy Beaudry  
Jackie and Robert Brodshaug  
Jocelyn Birch Burdick  
Brad & Julie Burgum  
Katherine Burgum  
Rick & Jody Burgum  
Ellen Chaffee  
Bruce and Linda Christianson  
Beverly and B. J. Clayburgh  
Bernie and Louise Dardis  
Kenneth & Edith Engberg  
Donald and Ardie Gackle  
Deb and Greg Gebeke  
Bill & Jean Guy  
Micheal and Sheila Hillman  
Kathryn Holle  
Ralph Kingsbury  
Pamela Kostelecky  
Phil Leitner

Robert L. Mason  
Robert and Bonita Neas  
Jerry and Patricia Sheldon  
Charles Stroup  
Enid E. Stroup  
Wayne & Bernice Stroup  
Art Thompson  
Barbara Williams

## **Washington Dollars for Scholars Organizations**

American Express Financial  
Advisors Inc.  
Associated Earth Sciences  
AXA Foundation  
Cheney Realty Inc.  
Covenant Mortgage Corporation  
Frontier Bank-Arlington  
Bill & Melinda Gates Foundation  
Independent Colleges of Washington  
Kiwanis Club of Arlington  
Korean American Political Education  
Foundation  
Nellie Mae  
Northwest Education Loan Association  
PAASE at Garfield High School Dollars  
for Scholars  
Pierre Enterprises  
Safeway Stores  
Stoneway Electric Supply  
Student Loan Finance Association  
Verizon Foundation  
Washington Financial Aid Association  
Washington Mutual  
Weyerhaeuser Company Foundation

## **Individuals**

Anonymous (4)  
L. and Janet Abrams  
Caroline and Gregory Anderson  
Loren and Maryann Anderson  
David Aramaki  
Georgeann Bafus  
Dale & Pam Bailey  
William Baker  
Jo Marie Balfour  
Harriott Balmer  
Nancy Barker  
Michael Bisesi  
Ruth Bishop  
Muriel Bott  
Roger and Lisa Botton  
George and Annalee Boulton  
Valerie and Larry Bradford  
Brock Brady  
Richard and Kmarcella Bramstedt  
David and Sanae Breen  
Doug and Vicky Sue Breithaupt  
Monte Bridges  
Carmen and Tim Bruya  
Curt Bush  
Winifred and Ark Chin  
Yvonne Chinn  
Sara Clair  
Alice Coate  
Carol Cochran  
Rebecca and John Collins

Continued on next page...

# Scholarship America Donors

...continued from previous page

Norma Conklin  
Richard Coon  
Dan Cosgrove  
Ron Crockett  
Elizabeth A. Crossman  
Justin & Kathryn L. Cykler  
Robert and Kathryn Dalton  
Marty Daniels  
Lori and Dean Davis  
Tina and Richard Davis  
Karen and Francis de Villa  
Rachel DeHoyos  
John Doan  
Carl and Trude Donovan  
David and Kathy Dormaier  
Patrick Duffy  
Jackie and Ronald Eckert  
Ernest and Barbara Elmore  
Linda and Gerald Evanson  
Jim and Gretchen Faulstich  
Trudy and Bruce Ferguson  
Dennis Flannigan  
Joann and Justus Freimund  
Jennifer Freimund  
Julia Freimund  
Marlene Fuson  
Wendy Gage  
Jaimie and Eric Garrett  
Sarah Gaunt  
Gladys Giberson  
James and Luna Gimlett  
Dan Glaefke  
Deborah Gonzalez  
Charles and Vivian Greer  
Sandra Greer  
Peg Greiwe  
Colleen and Christopher Greytak  
Col. Christopher M. Guppy, (RET)  
Scott Guthrie  
Nancy and Richard Halvorson  
Quincy Hanson  
Brian Harber  
Glenna and Glenn Hauenstein  
Carole Hayward-Lightell  
Catherine and Larry Heiberg  
Eileen and Dale Hemman  
Sue Ann and Rocky Heutink  
Arthur and Wonenka Himmler  
Donna and Ray Hinkkanen  
Suzanne Hitman  
James and Marjorie Hodgson  
Dee Hoeke  
Karenjean and Ronald Hoetmer  
Noreen and Bud Holten  
Ross Hunter  
Rev. Frederick Hutchinson  
Ralph Ibarra  
Eric Jacobsen  
Washington State Senator Ken Jacobsen  
Lynn James  
Jean Jayne  
Russell and Gale Jensen  
Greg and Mary Johnson  
Howard and Nancy Johnson  
Luther and Dee Jonson  
Howard and Marye Jorgenson

Rebecca and Marshall Judy  
Gary Justice  
Kumi Kilburn  
Rosalie and Gerald King  
Monica and Brian Kingsbury  
Janet and David Kipp  
Allen Kirkpatrick  
Judy Klein  
Kenyon Knopf  
Kathleen Koch  
Carolyn Kriegel  
Joanne and William Krueger  
Patricia and Kenneth Krugel  
Larry Kuney  
Jeffrey Lackey  
Ted Lagreid  
Dave Langford  
Roxanne Larson  
Elaine and James Lawler  
Anne Leiter & Ina Oppliger  
Kay Lewis  
Patricia Lewis  
Kathryn Linden  
Laura and Lawrence Majovski  
Jerilee Mann  
Andrea and Willard Martin  
Pamela and Ricard Matthiesen  
Thomas and Jeannine McFarland  
Beverly and Robert McKissick  
Christy and Steven Meltzer  
Reta and George Miller  
Richard and Wendy Millerick  
M. Emil and Judith Moilanen  
John and Holly Moore  
Nancy Nesheim  
W. and Lorna Niemantsverdriet  
Roberta and Steve Nieuwenhuis  
Ronald and Leslie Noborikawa  
Dennis and Leslie Noson  
Don O'Donnell  
Ken Olsen  
Maria O'Neil  
Joe & Mary Ortega  
Nancy Osborn  
Robert Lloyd Paulson  
Alan Peck & Kelli Miller  
Laurie Perry  
Stefan Persson  
James Pierre  
Shane Pierre  
Chuck and Sharon Podlich  
Mary Podrabsky  
Gary and Sarah Pollock  
Don and Michele Power  
Diann Puls  
David Radcliffe  
Diane and Steve Rasmusson  
Everett Reagan  
Jay Reifel  
Marilyn Reilly  
Rosa Reyes  
Andy Rice  
Gary and Teri Riedner  
James and Barbara Riley  
Mark Robinson  
Eileen Robison  
Marisa Rodriguez  
Wendy and Alan Roedell  
Julie Rolling & Jared Leising

Donald and Karin Ann Root  
Erin Scannell  
Julie and Kevin Schalock  
Stephanie Schneiderman-Mann  
R. A. Seeger and Robin Koch  
Kenneth and Joanne Seng  
Vincent Shaudys  
Deloris and Scott Shriner  
Holly Sloan-Buchanan  
Sid Snyder  
Kay Soltis  
Linda Sorenson  
Chris Spencer  
Jonathan and Jennifer Stickney  
David and Linda Surface  
Cheryl Swab & Gavin Layton  
Carole and Richard Swanson  
Linda Thompson  
Thao Tiedt  
Teresa and Richard Tillman  
Geoffery Toms  
Dean Hamilton Towner  
Curtis and Carol Trygstad  
Deborah and Lon Turner  
Lara Underhill  
Jeannie Van Dyke  
Carmen and Steven Van Tuyl  
Nikolaus Veit  
Karen Veitenhans  
Carlos Veliz  
Sharla and Mark Wagoner  
Lana Walter  
Emmy Watson  
Janice Watson & Terry O'Connor  
Eric Weaver  
Leanne and Donald Wells  
Libby and Leroy Werkhoven  
Charles and Mary Westfall  
Russell Whidbee  
Thomas Whitfield  
Cynthia and Kirk Wigen  
Kathi and Bob Williams  
Marsha Williams & Russell Haydon  
Bob and Kathy Wolf  
Richard and Linda Womack  
Marion Woyvodich  
Camille Wright  
Jerry and Ann Zabriskie

## HONOR GIFTS

The following individuals and organizations had gifts made in their honor:

Bill Adcock  
Warren Ashmann  
Sue Barnett  
Cynthia A. Bobseine  
Schuyler Brumbaugh  
Dean Buresh  
John E. Ciancotti  
Hillary R. Clinton  
William J. Clinton  
Howard Curd  
Thomas R. Ferrazano  
Eleanor S. Fronstin  
Samuel Gabe  
R. Groves

Elise N. Guimond  
Amy L. Kastner  
Thomas Kavalier  
Grace I. Krantz-Fugate  
Roz Lachman  
Richard L. Lee  
Elaine Leifert  
Phyllis R. McGrath  
Owen P. Mehigan  
Maryann Mironchik  
Margaret S. Nathan  
William C. Nelsen  
Harold Pinstein  
J. S. Putnam  
Sharon Redding  
Martin Rothstein  
Mark B. Schupack  
Charlotte Seigerman  
Linda S. Whitten  
Paul C. Winslow  
Carl Young

## MEMORY GIFTS

The following individuals had gifts made in their memory:

Gertrude M. Finegan  
Martin Heiss  
Florence Howes  
Tribute(s) for Catherine Huisiking  
Charles L. Huisiking  
Frank Huisiking  
Kevin Minks  
Frank Morin  
Misael Rosario  
Charles and Sydney Scher  
James Shannon  
Jean R. Swart  
Gloria Vogel  
John A. Wedum  
Andy Wolk

## THE MORTARBOARD SOCIETY

The Mortarboard Society honors friends who have established planned gifts for the benefit of Scholarship America and/or its programs.

Don C. Anderson\*\*  
Anonymous (2)  
Shirli M. Billings  
Bertha M. Boyum  
R. Bruce & Anne Braciszewski  
Lloyd & Lois Brandt  
Stephen E. Cramer  
Paul A. Dumdei  
Donald Elg  
Lorraine Elg  
Irving & Charlotte Fradkin  
Harold & Agatha Hebl  
Barbara & Joe Hinchey  
Leslie S. Hubbard\*  
Frank & Kathleen Huszar

Continued on next page...

# Scholarship America Donors

...continued from previous page

C.A. Gus\* & JoAnn Johnson  
Norma Johnson\*  
Gordon & Dorothy Kopischke  
Barbara M. Kuzdzol  
Edward & Pat Lee  
June Lees\*\*  
Greg Macri, Jr.\*\*  
Kay M. Marquet  
Phyllis R. McGrath  
Nancy R. Caldwell Mead  
Schuyler V. Mellen  
Betty Millward  
Howard Moreen\*  
Frank\* & Betty Jo Morin  
Ken & Sue Murray

William C. & Margaret R. Nelsen  
J. Stephen Putnam\*\*  
Peni Wilson Roberts  
Joseph & Marianna Roiger  
Doug & Grace Schroeder Scott  
Ralph & Sandra Seifert  
Stephen B. & Mary Smith  
Curtis & Carol Trygstad  
Fred & Nancy Vogel  
Barbara Vogelsang  
Dexter Witherell

\* *Deceased*

\*\* *New Mortarboard Member*

## NATIONAL CORPORATE SPONSORS

AmericInn International, LLC  
AXA Foundation  
Cub Foods  
Easy Spirit  
Henri Bendel  
Mercedes-Benz USA, LLC  
SuperValu Foundation  
Time Inc. Home Entertainment  
USA Funds

## NATIONAL EVENT SPONSORS

AXA Foundation  
Best Buy  
Robert W. Carlstrom Co., Inc.  
Easy Spirit  
Hickory Tech Corporation  
Marco Business Products, Inc.  
Mercedes-Benz USA, LLC  
Nelson Printing Co.  
North Star Consultants, Inc.  
Pell, Inc.  
Powell, Goldstein, Frazer  
& Murphy, LLP  
Target Corporation Family  
of Giving Programs  
The Tidings Corporation  
UAW Ford  
UPS Foundation  
USA Funds  
Wedum Foundation, Inc.



# Families of Freedom Scholarship Fund® and Families of Freedom 2 Donors

## FAMILIES OF FREEDOM SCHOLARSHIP FUND INDIVIDUALS

### **President's Club - (\$5,000 +)** Jeffrey Gold

### **Platinum Mortarboard Club - (\$1,000 +)** Anonymous Scott Humphrey & Nichole Converse-Humphrey Audrey & Albert B. Ratner

### **Gold Mortarboard Club - (\$500 +)** Jack Bender Dilruba Islam Katy Ramezani P. Williams

### **Silver Mortarboard Club - (\$250 +)** Joseph Muccia Daniel and Marna Pippel Eduardo Villa

### **Bronze Mortarboard Club - (\$100 +)** Mary Bonner Stephen Cvengros & Deborah Dean Scott Hayward Richard Heddy Brian Lakin Patricia Matsui Kimberley & David Mosier Barbara Paras Mr. Jessie E. Spinney

### **Citizens Circle Club - (\$1 +)** Anonymous Charles Anderson Kendra Bailes John Baker Kendra and Bruce Baker Maria Bernales-Nelson Ari Bernstein Laura Bernstein Michelle Cannizzaro Marc Carver Angelica Cecilio Marah and Myles Cluff Sophia Cruz Sophie L. Dangtran Alexander Devlin Robert Di Giacomo

Patricia and Chris Eck  
Rosiland Gardner  
Vincent Hansard  
Christina Harris  
Leslie and Harold Hosmer  
Jean-Michel Jean-Baptiste  
Lynn and Stephen Kaplan  
Mrs. Margaret M. and  
Dr. Raymond F. Lehner  
Lauren Lennick  
Ryan Lerner  
Kathleen Loehmer  
J. Lukaitis  
Carol and Peter Maher  
Nicole Maletta  
Laura Martinez  
Judy Martins  
Jeremy McCulla  
Matthew Meholic  
Salvatore Mucci  
Randi Pittman  
Adam Plott  
Monica Redmon  
Jessie Riley  
Noah Rosenblatt  
Alan Shapiro  
Ruth Singh  
Ester Smith  
Sherry Sookdeo  
Rina & Jochanan Stier  
Mary Sweeney  
Lien Ta  
Nicole Valentine & Ross D'Emanuele  
Diana and John Warner  
Jeanne Williams  
Timothy Yocum

## FAMILIES OF FREEDOM SCHOLARSHIP FUND ORGANIZATIONS

### **\$2,000,000 +** Twin Towers Fund

### **\$500,000 +** Giant Food Foundation Volkswagen Foundation

### **\$250,000 +** Citigroup Foundation

### **\$100,000 +** Marvel Entertainment Group, Inc.

### **\$50,000 +** Biogen, Inc. Federated Department Stores Foundation Nokia OfficeMax Sons of the American Revolution Tullett Liberty Investment Corp.

### **\$25,000 +** National Press Club Trends International Charitable Foundation, Inc. Wachovia Corporation

### **\$10,000 +** Educate America Hindu Temple & Cultural Society of USA, Inc. W. R. Hotchkiss Foundation

### **\$5,000 +** Galyan's Trading Co. MBIA Insurance Corporation NAHU Education Foundation Sealy, Inc. Signature Announcements

### **\$1,000 +** Citizens First National Bank Congregation Beth Judah Deutsche Bank Americas Foundation FDNY Cap Fund Hand Graphics Indiana University South East Marysville-Pilchuck High School St. Mary Mercy Hospital Turnstyle Entertainment, LLC Village Laguna of Laguna Beach, Inc.

### **\$1 +** Aetna Foundation The Baldwin School Bank of America Foundation, Inc. Frank W. Cox High School French Connection Group, Inc. Gap Inc. Giving Campaign Harvard University Ithaca High School Girls Lacrosse Team Karpas Strategies, LLC

Levi Strauss Foundation  
Locust Grove High School  
Student Council  
Madonna High School  
Microsoft Corporation  
RHS Basketball Boosters  
San Jose Mercury News  
Sears Roebuck & Co.  
Somers Central School District  
Sound Federal Savings  
UBS Matching Gifts Program  
Unique Flags  
University of Bridgeport  
Van Dyke Family Foundation  
Whittier Elementary School  
Student Council

## FAMILIES OF FREEDOM 2 DONORS

### **\$1,000,000 +** AXA Foundation

### **\$500,000 +** The Coca-Cola Foundation

### **\$50,000 +** Million Dollar Round Table Foundation

### **\$10,000 +** America East Conference Body Training Systems Trends International Charitable Foundation, Inc. Unocal Corporation

### **\$1,000 +** Mt. Hebron High School United States Secret Service

### **\$1 +** Baker/Merine Family Foundation, Inc. Emory University School of Law Hammerhead Systems, Inc. SaveMart Sewickley Academy William Carey College

# Scholarship America Boards & Trustees

## BOARD OF TRUSTEES: SENIOR OFFICERS

**Mr. Richard J. Schwab, Chair**  
*Entrepreneur*

**Ms. Phyllis S. McGrath,  
Immediate Past Chair**  
*President, Philanthropy Management*

**Dr. Shirli M. Billings, Secretary**  
*President, Billings & Company*

**Mr. Ashok N. Bakhru, Treasurer**  
*President, ABN Associates*

**Dr. William C. Bonifield, Clerk**  
*Vice President for Education,  
Lilly Endowment (Ret.)*

**Clifford L. Stanley**  
*President, Scholarship America*

## BOARD OF TRUSTEES: MEMBERS AT LARGE

**Dr. Rudy M. Castruita**  
*San Diego County Superintendent  
of Schools, San Diego County Office  
of Education*

**Ms. Elizabeth A. Crossman**  
*President, Weyerhaeuser  
Company Foundation*

**Mr. Jeffrey A. Dalke, Esq.**  
*Partner, DrinkerBiddle & Reath, LLP*

**Mr. Ken G. Jacobsen**  
*Washington State Senator*

**Ms. Linda Klinger**  
*(Council of Regions Representative)  
Executive Director, R.J. McElroy Trust*

**Mr. Howard Lee**  
*President, World Journal*

**Dr. James E. Lyons, Sr.**  
*President, California State University,  
Dominguez Hills*

**Ms. Kay M. Marquet**  
*President and CEO, Community  
Foundation Sonoma County*

**Ms. Barbara B. McBee**  
*Vice President, University Hospitals  
Health Systems*

**Ms. Marquita S. McLean**  
*Chair Pro Tem, Honor Roll Trustees  
Principal, McLean/Olohan & Associates*

**Ms. Lisa Mrozek**  
*(Council of Regions Representative)  
Senior Compliance Officer, Western  
Asset Management*

**Mr. Kenneth R. Murray**  
*Executive Vice President, Wells Fargo  
& Company (Ret.)*

**Mr. Michael T. O'Kane**  
*Senior Managing Director, Securities  
Division, TIAA/CREF (Ret.)*

**Mr. Wintley A. Phipps**  
*Founder and President, U.S. Dream  
Academy*

**Ms. Paula Prah**  
*Vice President for Public Affairs, Best  
Buy Corporation*

**Mr. Michael Ryan**  
*Managing Director, Equities Division,  
Goldman, Sachs & Co.*

**Ms. Mim Schreck**  
*Former President, Easy Spirit*

## NATIONAL ADVISORY BOARD

Dr. William L. Bainbridge  
*President and CEO, SchoolMatch*

Mr. B. Scott Ball

Mr. Mark W. Bates  
*Vice President for Institutional  
Advancement, Maryville University  
of St. Louis (Ret.)*

Dr. Roger W. Benjamin  
*President, Council for Aid to Education*

Mr. Monte L. Bridges  
*Superintendent, Puget Sound  
Educational Services District*

Ms. Bernice B. Brown  
*Dean, CalWorks Education & Training,  
City College of San Francisco*

Ms. Pam Brown  
*Senior Editor, and Director of Make A  
Difference Day, USA Weekend*

Ms. Kay Carlson  
*President, AXA Foundation, Inc.*

Mr. Kevin M. Carroll  
*Senior Manager, Levi Strauss  
Foundation and Worldwide & U.S.  
Community Affairs, Levi Strauss  
& Company*

Mr. Timothy A. Christensen  
*Vice President of Planning,  
Development, and Administration,  
NASFAA*

Mr. Joe Cipfl  
*Advisor to the President,  
McKendree College*

Ms. Ann Coles  
*Senior Vice President, and Director,  
Pathways to College Network, The  
Education Resource Institute*

Mr. Stewart T. Coulson  
*Counselor/Consultant, Charles City  
Community Schools*

Mr. Carl C. Dalstrom  
*President and CEO, USA Funds*

Dr. Brian L. Donnelly  
*Director, UMass Center for Professional  
Education*

Dr. Richard H. Ekman  
*President, Council of Independent  
Colleges*

Ms. Suzanne Huffmon Esber  
*Executive Director, Fluor Foundation*

Dr. Chester A. Francke  
*General Director, Education Activities,  
General Motors (Ret.)*

Dr. Mary H. Futrell  
*Dean, Graduate School of Education  
and Human Development, The  
George Washington University*

Dr. Morris Gaebe  
*Chancellor and Chairman of the Board,  
Johnson & Wales University*

Mr. Archie J. Givens  
*Executive Director, Givens Foundation  
for African American Literature*

Mr. Robert K. Goodwin  
*President and CEO, Points of Light  
Foundation*

Mr. David Hessekiel  
*President, Cause Marketing Forum*

Mr. Evan Jones  
*President and CEO,  
Digene Diagnostics, Inc.*

Ms. Renee Kosel  
*Illinois House of Representatives*

Mr. Lester A. Kretman  
*Producer, NBC News*

Mr. David B. Laird, Jr.  
*President, Minnesota's Private Colleges  
Council*

Mr. W. Patrick Lawrence, II  
*Lawrence & Associates*

Rev. Robert P. Lawrence  
*Senior Pastor*

Ms. Joan Roeben Licursi  
*Senior Vice President, Strategic Growth,  
Gilda's Club Worldwide*

Ms. Judith Lewis Logue  
*Director of Financial Aid Services,  
University of San Diego*

Mr. William B. Marine  
*President, GCA Trading Company, LLC*

Ms. Dena McKelvey  
*President, McKelvey Foundation*

Mr. Jacob McKissick  
*Student Representative –  
Community Programs*

*Continued on next page...*

# Scholarship America Boards & Trustees

...continued from previous page

Mr. Jamie P. Merisotis  
President, *The Institute for Higher Education Policy*

Ms. Deborah L. Myman

Mr. Merrill Osmond  
*Osmond Brothers and Bear Foundation for Youth*

Ms. Robin H. Pence  
Vice-President, *Communications, AES*

Mr. Robert B. Rasmussen  
Consultant, *Institutional Advancement*

Ms. Adriana Rivera  
Education Specialist, *National Society of Hispanic MBA's*

Mr. Joseph A. Russo  
Director of Financial Aid, *University of Notre Dame*

Ms. Amy Ryan Rued

Mr. Michael J. Ryder  
Vice President, *Morgan Stanley*

Ms. Seema R. Shah  
Trademark Counsel, *General Mills Inc.*

Mr. Frank L. Sims  
Corporate Vice President of  
*Transportation, Cargill, Inc.*

Mr. Donald U. Smith, III  
Executive Director, *Christ Church Preservation Trust*

Ms. Joyce E. Smith  
Executive Director, *National Association for College Admission Counseling*

Ms. Susan J.L. Soh  
Senior Vice President, *Director Business Development and Marketing, Highbridge Capital Management*

Mr. Aseem "Ben" B. Suri  
Student Representative –  
*Scholarship Management Services*

Ms. Sara A. Martinez Tucker  
President and CEO, *Hispanic Scholarship Fund*

Dr. David L. Ward  
President, *American Council on Education*

Dr. David L. Warren  
President, *NAICU*

Mr. Richard K. Washington  
Unit Director, *Boys & Girls Club of the Peninsula*

Ms. Christine Wiggins  
President, *Imhotep Charter High School*

Mr. Richard B. Williams  
Executive Director, *American Indian College Fund*

## TRUSTEES HONOR ROLL

Dr. Irving A. Fradkin  
Founder, *CSFA*

Mr. Lloyd L. Brandt

Mr. Joseph M. Hinchey, Esq.

C.A. (Gus) Johnson, II, Esq. *(Deceased)*

Mr. E.B. (Burt) Knauft  
Executive Vice President, *Independent Sector (Ret.)*

Ms. Barbara M. Kuzdzol

Mr. Edward M. Lee, Esq.  
*Edward M. Lee, J.D., Inc.*

Mr. Gregory J. Macri, Jr.  
President, *GJ Products*

Ms. Marquita S. McLean  
Chair Pro Tem, *Principal, McLean/Olohan & Associates*

Ms. Patricia B. Mooney  
*Christopher J. Barrett Realtors*

Mr. Howard Moreen *(Deceased)*

Mr. Frank E. Morin *(Deceased)*

William (Brad) B. Norris, Esq.

Mr. Joseph F. Phelan

Ms. Peni Wilson Roberts  
President, *Cornerstone Management*

Mr. Harry A. Rosenberg *(Deceased)*

Mr. Ralph H. Seifert  
*Lighthouse Underwriters LLC*

Mr. Stephen B. Smith

Mr. David Logan Steele, CTFA, APE  
Vice President and Senior Trust Officer,  
*Jonestown Bank & Trust Company (Ret.)*

Mr. Eugene C. Struckhoff, Esq.  
Executive Director, *Development, York Foundation (Ret.)*

Mr. Michael A. Vorhaus  
Managing Director, *Frank N. Magid Associates*

Mr. Philip J. Webster  
President, *The Webster Group*

Mr. John A. Wedum *(Deceased)*

## TRUSTEES EMERITI

Mr. James Alexander  
Principal, *Alexander Associates*

Mr. Thomas D. Bellinger  
President, *Planned Results Inc.*

Mr. J. Moreau Brown  
Contributions Officer, *General Electric (Ret.)*

Mr. Ben Crosby

Mr. Garth E. Dimon  
Senior Vice President, *Bristol-Myers (Ret.)*

Mr. Harold J. Hebl  
Executive Director, *Minnesota Association for Counseling and Development (Ret.)*

Mr. Leslie S. Hubbard *(Deceased)*

Mr. Donald G. James  
Partner, *Parker & James Communications*

Mr. Morgan Odell

Ms. Ruth Jones Saxey  
Consultant

Ms. Felice Schwarz *(Deceased)*

Mr. Thaddeus Seymour  
President, *Wabash College (Ret.)*

Mr. Edward M. Shapiro  
President, *Southern New Hampshire University (Ret.)*

## DOLLARS FOR SCHOLARS COUNCIL OF REGIONS

Mr. David Webster, Chair

Mr. Robert J. Alin (North Dakota)  
Partner/Manager, *Scheels Hardware & Sports Stores Inc. (Ret.)*

Ms. Deb Donlon (New York)  
Vice President, *New Business, M&T Bank*

Mr. Carl Donovan (Washington)

Mr. Lyle Fogel (Indiana)

Mr. Virgil Horne (Co-Rep., Nebraska)  
Assistant to the Superintendent, *Lincoln Public Schools*

Ms. Linda Klinger (Iowa)  
Executive Director, *R.J. McElroy Trust*

Mr. Don Klosterbuer (Minnesota)  
*Skewes Klosterbuer & Vaigrt*

Ms. Hazel Loucks (Illinois)

Ms. Janis McKenzie (Co-Rep., Nebraska)  
Executive Director, *Nebraska Insurance Federation*

Ms. Lisa Mrozek (California)  
Senior Compliance Officer, *Western Asset Management*

### For more information about:

**Starting a scholarship or educational assistance program at your company,**  
call Scholarship Management Services at 800/537-4180

**Organizing a Dollars for Scholars chapter,**  
call 800/537-4180, ext. 490

**Starting a ScholarShop in your community,**  
call 800/537-4180, ext. 656

**Sponsorship opportunities,**  
call 800/279-2083

**Making a donation,**  
call 800/279-2083